

Recombinant human GTF2F2 protein

Catalog Number: ATGP1524

PRODUCT INFORMATION

Expression system

E.coli

Domain

1-249aa

UniProt No.

P13984

NCBI Accession No.

NP_004119

Alternative Names

General transcription factor IIF subunit 2, BTF4; RAP30; TF2F2; TFIIF

PRODUCT SPECIFICATION

Molecular Weight

30.5 kDa (269aa) confirmed by MALDI-TOF (Molecular weight on SDS-PAGE will appear higher)

Concentration

0.5mg/ml (determined by Bradford assay)

Formulation

Liquid in. 20mM Tris-HCl buffer (pH 8.0) containing 20% glycerol 0.2M NaCl, 1mM DTT

Purity

> 90% by SDS-PAGE

Tag

His-Tag

Application

SDS-PAGE

Storage Condition

Can be stored at +2C to +8C for 1 week. For long term storage, aliquot and store at -20C to -80C. Avoid repeated freezing and thawing cycles.

BACKGROUND

Description

GTF2F2, also known as TFIIF, is a general transcription initiation factor that binds to RNA polymerase II and helps to recruit it to the initiation complex in collaboration with TFIIB. It promotes transcription elongation. This subunit shows ATP-dependent DNA-helicase activity. Recombinant human GTF2F2 protein, fused to His-tag at N-terminus, was expressed in E. coli and purified by using conventional chromatography techniques.

Amino acid Sequence

MGSSHHHHHH SGLVPRGSH MAERGELDLT GAKQNTGVWL VKVPKYLSSQ WAKASGRGEV GKLRIAKTQG

Recombinant human GTF2F2 protein

Catalog Number: ATGP1524

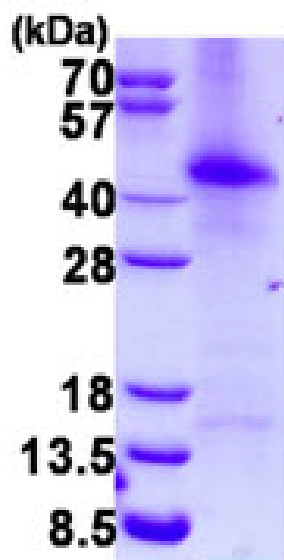
RTEVSFTLNE DLANIHDIGG KPASVSAPRE HPFVLQSVGG QTLTVFTESS SDKLSLEGIV VQRAECPAA SENYMRLKRL
QIEESSKPVR LSQQLDKVVT TNYKPVANHQ YNIEYERKKK EDGKRARADK QHVLDMLFSA FEKHQYYNLK DLVDITKQPV
VYLKEILKEI GVQNVKGIHK NTWELKPEYR HYQGEEKSD

General References

Purrello M. et al. (1995) Cytogenet Cell Genet. 69(1-2):75-80.

DATA

SDS-PAGE



3ug by SDS-PAGE under reducing condition and visualized by coomassie blue stain.

15% SDS-PAGE (3ug)