

# Recombinant mouse GRO alpha/CXCL1 protein

Catalog Number: ATGP1525

## PRODUCT INFORMATION

---

### Expression system

E.coli

### Domain

25-96aa

### UniProt No.

P12850

### NCBI Accession No.

NP\_032202

### Alternative Names

C-X-C motif chemokine ligand 1, Growth-regulated alpha protein, Platelet-derived growth factor-inducible protein KC, Secretory protein N51, Fsp, Gro1, KC, KC/GRO-alpha, Mgsa, N51, Scyb1

## PRODUCT SPECIFICATION

---

### Molecular Weight

10.5 kDa (97aa) confirmed by MALDI-TOF

### Concentration

0.5mg/ml (determined by Bradford assay)

### Formulation

Liquid in. 20mM Tris-HCl buffer (pH 8.0) containing 10% glycerol 0.1M NaCl,

### Purity

> 90% by SDS-PAGE

### Tag

His-Tag

### Application

SDS-PAGE

### Storage Condition

Can be stored at +2C to +8C for 1 week. For long term storage, aliquot and store at -20C to -80C. Avoid repeated freezing and thawing cycles.

## BACKGROUND

---

### Description

CXCL1, also known as GROA or GRO-alpha, is a growth factor for melanoma cells and a chemotaxin for neutrophils. Similar to other alpha chemokines, this protein is potent neutrophil attractant and activator and is also active toward basophils. In addition, CXCL1 protein may be a therapeutic target as well as a diagnostic marker in ovarian cancer. Recombinant mouse CXCL1 protein, fused to His-tag at N-terminus, was expressed in E. coli and purified by using conventional chromatography techniques

## Recombinant mouse GRO alpha/CXCL1 protein

Catalog Number: ATGP1525

### Amino acid Sequence

MGSSHHHHHH SSGLVPRGSH MGSHMAPIAN ELRCQCLQTM AGIHLKNIQS LKVLPSGPHC TQTEVIATLK NGREACLDPE  
APLVQKIVQK MLKGVPK

### General References

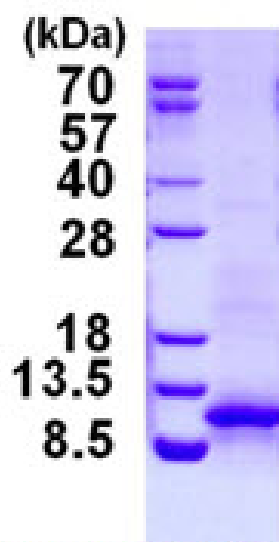
Sun,D.. et al. .(2011) Nat. Immunol. 12 (9), 853-860

Oka,M., et al. (2011) Lab. Invest. 91 (5), 711-718

## DATA

---

### SDS-PAGE



3ug by SDS-PAGE under reducing condition and visualized by coomassie blue stain.

15% SDS-PAGE (3ug)