

Recombinant human Bcl-2 related protein A1 protein

Catalog Number: ATGP1542

PRODUCT INFORMATION

Expression system

E.coli

Domain

1-152aa

UniProt No.

Q16548

NCBI Accession No.

CAG46760

Alternative Names

Bcl-2-related protein A1, BCL2L5, BFL1, GRS, HBPA1

PRODUCT SPECIFICATION

Molecular Weight

20.2 kDa (176aa) confirmed by MALDI-TOF

Concentration

0.5mg/ml (determined by Bradford assay)

Formulation

Liquid in. 20mM Tris-HCl buffer (pH 8.0) containing 10% glycerol

Purity

> 95% by SDS-PAGE

Tag

His-Tag

Application

SDS-PAGE

Storage Condition

Can be stored at +2C to +8C for 1 week. For long term storage, aliquot and store at -20C to -80C. Avoid repeated freezing and thawing cycles.

BACKGROUND

Description

BCL2A1, also known as Bcl-2-related protein A1, retards apoptosis induced by IL-3 deprivation. This protein functions in the response of hemopoietic cells to external signals and in maintaining endothelial survival during infection. Recombinant human BCL2A1 protein, fused to His-tag at N-terminus, was expressed in E. coli and purified by using conventional chromatography.

Amino acid Sequence

MGSSHHHHHH SGLVPRGSH MGSHTDCEF GYIYRLAQDY LQYVLQIPQP GSGPSKTSRV LQKVAFSVQK EVEKNLKSCL

Recombinant human Bcl-2 related protein A1 protein

Catalog Number: ATGP1542

DNVNVSVSDT ARTLFNQVME KEFEDDIINW GRIVTIFAFE GILIKLLRQ QIAPDVDTYK EISYFVAEFI MNNTGEWIRQ
NGGWENGFVK KFEPKS

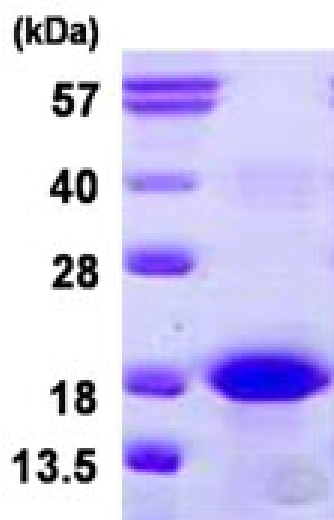
General References

Kenny J.J., et al. (1997) *Oncogene*. 14:997-1001

Choi S.S., et al. (1995) *Oncogene*. 11:1693-1698

DATA

SDS-PAGE



15% SDS-PAGE (3ug)

3ug by SDS-PAGE under reducing condition and visualized by coomassie blue stain.