

Recombinant human YARS2 protein

Catalog Number: ATGP1554

PRODUCT INFORMATION

Expression system

E.coli

Domain

17-477aa

UniProt No.

Q9Y2Z4

NCBI Accession No.

NP_001035526

Alternative Names

Tyrosyl-tRNA synthetase mitochondrial precursor, Tyrosyl-tRNA synthetase, mitochondrial precursor, CGI-04, FLJ13995, MLASA2, MT-TYRRS, TYRRS

PRODUCT SPECIFICATION

Molecular Weight

53.6 kDa (482aa)

Concentration

0.25mg/ml (determined by Bradford assay)

Formulation

Liquid in. 20mM Tris-HCl buffer (pH 8.0) containing 20% glycerol, 0.1M NaCl, 1mM DTT

Purity

> 85% by SDS-PAGE

Tag

His-Tag

Application

SDS-PAGE

Storage Condition

Can be stored at +2C to +8C for 1 week. For long term storage, aliquot and store at -20C to -80C. Avoid repeated freezing and thawing cycles.

BACKGROUND

Description

YARS2, also known as tyrosyl-tRNA synthetase, catalyzes the attachment of tyrosine to tRNA (Tyr) in a two-step reaction: tyrosine is first activated by ATP to form Tyr-AMP and then transferred to the acceptor end of tRNA (Tyr). Recombinant human YARS2 protein, fused to His-tag at N-terminus, was expressed in E. coli and purified by using conventional chromatography.

Recombinant human YARS2 protein

Catalog Number: ATGP1554

Amino acid Sequence

<MGSSHHHHHH SSGLVPRGSH M>TLNLSVLLP LGLRKAHSGA QGLLAAQKAR GLFKDFFPET GTKIPELPELF
DRGTASFPQT IYCGFDPTAD SLHVGHLLAL LGLFHLQRAG HNVIALVGGA TARLGDPSGR TKEREALETE RVRANARALR
LGLEALAAH QQLFTDGRSW GSFTVLDNSA WYQKQHLVDF LAAVGGHFRM GTLLSRQSVQ LRLKSPEGMS LAEFFYQVLQ
AYDFYLLFQR YGCRVQLGGS DQLGNIMSGY EFINKLTGED VFGITVPLIT STTGAKLGKS AGNAVWLNDRD KTSPFELYQF
FVRQPDDSVE RYLKLFITFLP LPEIDHIMQL HVKEPERRGP QKRLAAEVTK LVHGREGLDS AKRCTQALYH SSIDALEVMS
DQELKELFKE APFSEFFLDP GTSVLDTCRK ANAIPDGPRG YRMITEGGVS INHQQVTNPE SVLIVGQHIL KNGLSLLKIG
KRNFYIIKWL QL

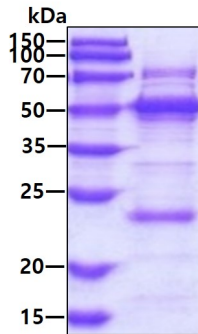
General References

Bonnefond L., et al. (2005) *Biochemistry*. 44:4805-4816

Riley L.G., et al. (2010) *Am. J. Hum. Genet.* 87:52-59

DATA

SDS-PAGE



3 μ g by SDS-PAGE under reducing condition and visualized by coomassie blue stain