

# Recombinant human CLTA protein

Catalog Number: ATGP1560

## PRODUCT INFORMATION

---

### Expression system

E.coli

### Domain

1-218aa

### UniProt No.

P09496

### NCBI Accession No.

NP\_001824

### Alternative Names

Clathrin light chain A, Clathrin, light chain A, LCA

## PRODUCT SPECIFICATION

---

### Molecular Weight

26.2 kDa (242aa) confirmed by MALDI-TOF (Molecular weight on SDS-PAGE will appear higher)

### Concentration

1mg/ml (determined by Bradford assay)

### Formulation

Liquid in. 20mM Tris-HCl buffer (pH 8.0) containing 0.1M NaCl, 10% glycerol

### Purity

> 90% by SDS-PAGE

### Tag

His-Tag

### Application

SDS-PAGE

### Storage Condition

Can be stored at +2C to +8C for 1 week. For long term storage, aliquot and store at -20C to -80C. Avoid repeated freezing and thawing cycles.

## BACKGROUND

---

### Description

Clathrin, light chain A, also known as CLTA, belongs to the clathrin family. Clathrin is a large, soluble protein composed of heavy and light chains. It is a major cytosolic coat protein in pits and vesicles originating from the plasma membrane and the trans-Golgi network. In receptor-mediated endocytosis, receptor proteins are captured by Clathrin-coated vesicles. CLTA is one of two clathrin light chain proteins which are believed to function as regulatory elements. Recombinant human CLTA protein, fused to His-tag at N-terminus, was expressed in E. coli and purified by using conventional chromatography techniques.

## Recombinant human CLTA protein

Catalog Number: ATGP1560

### Amino acid Sequence

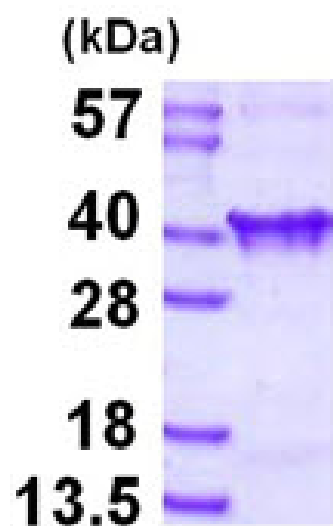
MGSSHHHHHH SSSLVPRGSH MGSHEMAELDP FGAPAGAPGG PALGNGVAGA GEEDPAAAFLL AQQESEIAGI ENDEAFAILD  
GGAPGPQPHG EPPGGPDAVD GVMNGEYYQE SNGPTDSYAA ISQVDRLQSE PESIRKWREE QMERLEALDA  
NSRKQEAWEK EKAIKELEEW YARQDEQLQK TKANNRAAEE AFVNDIDESS PGTEWERVER LCDFNPKSSK QAKDVSRMRS  
VLISLKQAPL VH

### General References

Kirchhausen T., et al. (1987) Proc Natl Acad Sci uSA. 84:8805-8809.  
Liu S H., et al. (1995) Cell. 83: 257-267.

## DATA

### SDS-PAGE



3ug by SDS-PAGE under reducing condition and visualized by coomassie blue stain.

15% SDS-PAGE (3ug)