

Recombinant human NPM1 protein

Catalog Number: ATGP1576

PRODUCT INFORMATION

Expression system

E.coli

Domain

1-294aa

UniProt No.

P06748

NCBI Accession No.

NP_002511.1

Alternative Names

Nucleophosmin, B23, NPM

PRODUCT SPECIFICATION

Molecular Weight

34.7 kDa (314aa) confirmed by MALDI-TOF

Concentration

0.5mg/ml (determined by Bradford assay)

Formulation

Liquid in. 20mM Tris-HCl buffer (pH 8.0) containing 10% glycerol 0.15M NaCl,1mM DTT

Purity

> 85% by SDS-PAGE

Tag

His-Tag

Application

SDS-PAGE

Storage Condition

Can be stored at +2C to +8C for 1 week. For long term storage, aliquot and store at -20C to -80C. Avoid repeated freezing and thawing cycles.

BACKGROUND

Description

NPM1 is a phosphoprotein which moves between the nucleus and the cytoplasm. It is thought to be involved in several processes including regulation of the ARF/p53 pathway. A number of genes are fusion partners have been characterized, in particular the anaplastic lymphoma kinase gene on chromosome 2. Mutations in NPM1 are associated with acute myeloid leukemia. Recombinant human NPM1 protein, fused to His-tag at N-terminus, was expressed in E. coli and purified by using conventional chromatography techniques.

Recombinant human NPM1 protein

Catalog Number: ATGP1576

Amino acid Sequence

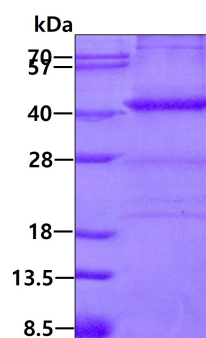
<MGSSHHHHHH SSGLVPRGSH> MEDSMDMDMS PLRPQNYLFG CELKADKDYH FKVDNDENEH QLSLRTVSLG
AGAKDELHIV EAEAMNYEGS PIKVTLATLK MSVQPTVSLG GFEITPPVVL RLKCGSGPVH ISGQHLVAVE EDAESEDEEE
EDVKLLSISG KRSAPGGGSK VPQKKVKLAA DEDDDDDDEE DDEDDDDDDD FDDEEAEEKA PVKKSIRDTP AKNAQKSNQN
GKDSKPSSTP RSKGQESFKK QEKTPKTPKG PSSVEDIKAK MQASIEKGGG LPKVEAKFIN YVKNCFRMTD QEAIQDLWQW
RKSL

General References

Sagawa, F., et al. (2011) EMBO J. 30 (19), 3994-4005.
Neubauer, A., et al. (2011) Exp. Hematol. 39 (10), 1030-1042.

DATA

SDS-PAGE



3 μ g by SDS-PAGE under reducing condition and visualized by coomassie blue stain.