

Recombinant human Cyclin B2 protein

Catalog Number: ATGP1583

PRODUCT INFORMATION

Expression system

E.coli

Domain

1-398aa

UniProt No.

O95067

NCBI Accession No.

NP_004692.1

Alternative Names

G2/mitotic-specific cyclin-B2, HsT17299

PRODUCT SPECIFICATION

Molecular Weight

47.8 kDa (422aa) confirmed by MALDI-TOF

Concentration

0.25mg/ml (determined by Bradford assay)

Formulation

Liquid in. 20mM Tris-HCl buffer (pH 7.5) containing 10% glycerol, 0.5M NaCl, 250mM Imidazol

Purity

> 90% by SDS-PAGE

Tag

His-Tag

Application

SDS-PAGE

Storage Condition

Can be stored at +2C to +8C for 1 week. For long term storage, aliquot and store at -20C to -80C. Avoid repeated freezing and thawing cycles.

BACKGROUND

Description

CCNB2, also known as G2/mitotic-specific cyclin-B2, belongs to the cyclin family. CCNB2 is essential for the control of the cell cycle at the G2/M (mitosis) transition. It interacts with the CDK1 protein kinase to form a serine/threonine kinase holoenzyme complex also known as maturation promoting factor (MPF). Recombinant human CCNB2 protein, fused to His-tag at N-terminus, was expressed in E. coli and purified by using conventional chromatography.

Recombinant human Cyclin B2 protein

Catalog Number: ATGP1583

Amino acid Sequence

<MGSSHHHHHH SSGLVPRGSH MGS>HMALLRR PTVSSDLENI DTGVNSKVKS HVTIRRTVLE EIGNRVTTTRA
AQVAKKAQNT KVPVQPTKTT NVNKQLKPTA SVKPVQMEKL APKGPSPTPE DVSMKEENLC QAFSDALLCK IEDIDNEDWE
NPQLCSDYVK DIYQYLRQLE VLQSINPHFL DGRDINGRMR AILVDWLQV HSKFRLLQET LYMCVGIMDR FLQVQPVSRL
KLQLVGITAL LLASKYEEMF SPNIEDFVYI TDNAYTSSQI REMETLILKE LKFELGRPLP LHFLRRASKA GEVDVEQHTL
AKYLMELTLI DYDMVHYHPS KVAAAASCLS QKVLGQGKWN LKQQYYTGYT ENEVLEVMQH MAKNNVVKVNE NLTKFIAIKN
KYASSKLLKI SMIPQLNSKA VKDLASPLIG RS

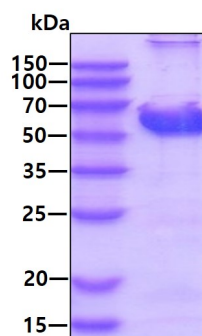
General References

Wang B., et al. (2008) Anal. Chem. 80:9526-9533

Dephoure N., et al. (2008) Proc. Natl. Acad. Sci. u.S.A. 105:10762-10767

DATA

SDS-PAGE



3ug by SDS-PAGE under reducing condition and visualized by coomassie blue stain.