

Recombinant human SPIN1 protein

Catalog Number: ATGP1589

PRODUCT INFORMATION

Expression system

E.coli

Domain

1-262aa

UniProt No.

Q9Y657

NCBI Accession No.

NP_006708

Alternative Names

Spindlin-1, Spin

PRODUCT SPECIFICATION

Molecular Weight

32kDa (285aa) confirmed by MALDI-TOF

Concentration

0.25mg/ml (determined by Bradford assay)

Formulation

Liquid in. 20mM Tris-HCl buffer (pH 8.0) containing 20% glycerol 0.15M NaCl

Purity

> 90% by SDS-PAGE

Tag

His-Tag

Application

SDS-PAGE

Storage Condition

Can be stored at +2C to +8C for 1 week. For long term storage, aliquot and store at -20C to -80C. Avoid repeated freezing and thawing cycles.

BACKGROUND

Description

SPIN1 belongs to the SPIN/STSY family. It is expressed in various tissues and cells, is localized to nucleus. This protein may play a role in cell-cycle regulation during the transition from gamete to embryo. Recombinant human SPIN1 protein, fused to His-tag at N-terminus, was expressed in E. coli and purified by using conventional chromatography techniques.

Amino acid Sequence

MGSSHHHHHH SGLVPRGSH MGSMKTPFGK TPGQRSRADA GHAGVSANMM KKRTSHKKHR SSVGPSKPVS

Recombinant human SPIN1 protein

Catalog Number: ATGP1589

QPRRNIVGCR IQHGWKEGNG PVTQWKGTVL DQVPVNPSLY LIKYDGFDCV YGLELNKDER VSALEVL PDR VATSRISDAH
LADTMIGKAV EHMFE TEDGS KDEWRGMVLA RAPVMNTWFY ITYEKDPVLY MYQLLDYKE GDLRIMPDSN DSPPAERE PG
EVDVSLVGKQ VEYAKEDGSK RTGMVIHQVE AKPSVYFIKF DDDFHIVYD LVKTS

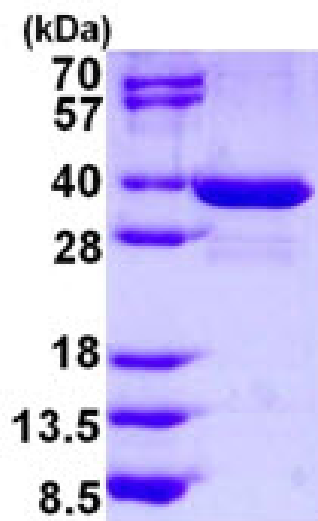
General References

Zhang, P. et al. (2008) J. Cell. Physiol. 217 (2), 400-408

Yuan, H., et al. (2008) Gene 410 (1), 67-74

DATA

SDS-PAGE



3ug by SDS-PAGE under reducing condition and visualized by coomassie blue stain.

15% SDS-PAGE (3ug)