

# Recombinant human HSCB protein

Catalog Number: ATGP1604

## PRODUCT INFORMATION

---

### Expression system

E.coli

### Domain

30-235aa

### UniProt No.

Q8IWL3

### NCBI Accession No.

NP\_741999

### Alternative Names

HscB iron-sulfur cluster co-chaperone homolog (E.coli), dj366L4.2, DNAJC20, HSC20, JAC1

## PRODUCT SPECIFICATION

---

### Molecular Weight

26.7 kDa (231aa) confirmed by MALDI-TOF

### Concentration

1mg/ml (determined by Bradford assay)

### Formulation

Liquid in. 20mM Tris-HCl buffer (pH 8.0) containing 10% glycerol, 0.15M NaCl

### Purity

> 90% by SDS-PAGE

### Tag

His-Tag

### Application

SDS-PAGE

### Storage Condition

Can be stored at +2C to +8C for 1 week. For long term storage, aliquot and store at -20C to -80C. Avoid repeated freezing and thawing cycles.

## BACKGROUND

---

### Description

HSCB belongs to the hscB family and contains 1 J domain. This protein is expressed in lung, brain, stomach, spleen, ovary, testis, liver, muscle and heart and localized to mitochondria and cytoplasm. It may act as a co-chaperone in iron-sulfur cluster assembly in mitochondria, Interacts with ISCu and HSPA9. Recombinant human HSCB protein, fused to His-tag at N-terminus, was expressed in E. coli and purified by using conventional chromatography techniques.

## Recombinant human HSCB protein

Catalog Number: ATGP1604

### Amino acid Sequence

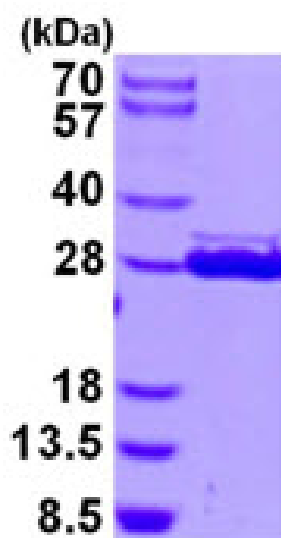
MGSSHHHHHH SSSLVPRGSH MGSHEMAASQA GSNYPWCWNC GGPWGPGRD RFFCPQCRAL QAPDPTRDYF  
SLMDCNRSFR VDTAKLQHRY QQLQRLVHPD FFSQRSQTEK DFSEKHSTLV NDAYKTLLAP LSRGLYLLKL HGIEIPERTD  
YEMDRQFLIE IMEINEKLAE AESEAAMKEI ESIVKAKQKE FTDNVSSAFE QDDFEEAKEI LTKMRYFSNI EEKIKLKKIP L

### General References

Sun G., et al. (2003) J. Hum. Genet. 48, 415-419  
Bitto E., et al. (2008) J. Biol. Chem. 283, 30184-30192

## DATA

### SDS-PAGE



3ug by SDS-PAGE under reducing condition and visualized by coomassie blue stain.

15% SDS-PAGE (3ug)