

Recombinant human Epimorphin/Syntaxin 2 protein

Catalog Number: ATGP1613

PRODUCT INFORMATION

Expression system

E.coli

Domain

1-264aa

UniProt No.

P32856

NCBI Accession No.

NP_919337

Alternative Names

Syntaxin-2, EPIM, EPM, STX2A, STX2B, STX2C

PRODUCT SPECIFICATION

Molecular Weight

33.6 kDa (289aa) confirmed by MALDI-TOF

Concentration

0.25mg/ml (determined by Bradford assay)

Formulation

Liquid in. 20mM Tris-HCl buffer (pH 8.0) containing 0.1M NaCl, 50% glycerol, 1mM DTT

Purity

> 95% by SDS-PAGE

Tag

His-Tag

Application

SDS-PAGE

Storage Condition

Can be stored at +2C to +8C for 1 week. For long term storage, aliquot and store at -20C to -80C. Avoid repeated freezing and thawing cycles.

BACKGROUND

Description

Syntaxin-2, also known as STX2, belongs to the syntaxin/epimorphin family of proteins. Syntaxin family is cellular receptors for transport vesicles which participate in exocytosis in neutrophils. STX2 is a t-SNARE that localizes to the apical plasma membrane and intracellular vesicular structures. Also, STX2, along with SNAP-23, is required for regulated surfactant secretion. Recombinant human STX2 protein, fused to His-tag at N-terminus, was expressed in E. coli and purified by using conventional chromatography techniques.

Recombinant human Epimorphin/Syntaxin 2 protein

Catalog Number: ATGP1613

Amino acid Sequence

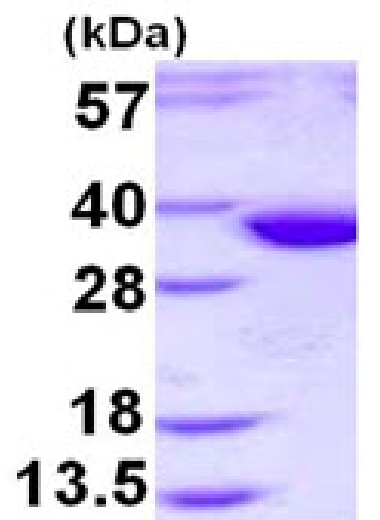
MGSSHHHHHH SSGLVPRGSH MGSMMRDRL PDLTACRKNL DGDTVVVVEK DHFMDDFFHQ VEEIRNSIDK
ITQYVEEVKK NHSIILSAPN PEGKIKEELE DLNKEIKKTA NKIRAKLKAI EQSFDQDESG NRTSVDLRIR RTQHSVLSRK
FVEAMAEYNE AQTFRFRERSK GRIQRQLEIT GRITTDDELE EMLESGKPSI FTSDIISDSQ ITRQALNEIE SRHKDIMKLE
TSIRELHEMF MDMAMFVETQ GEMINNIERN VMNATDYVEH AKEETKKAIA YQSKARRKK

General References

Abonyo BO., et al. (2004) Biochemistry. 43:3499-3506.
Bennett M K., et al. (1993) Cell. 74: 863-873.

DATA

SDS-PAGE



3ug by SDS-PAGE under reducing condition and visualized by coomassie blue stain.

15% SDS-PAGE (3ug)