

Recombinant human OVCA2 protein

Catalog Number: ATGP1618

PRODUCT INFORMATION

Expression system

E.coli

Domain

1-227aa

UniProt No.

Q8WZ82

NCBI Accession No.

NP_543012

Alternative Names

Ovarian tumor suppressor candidate 2, Ovarian cancer-associated gene 2 protein

PRODUCT SPECIFICATION

Molecular Weight

26.9 kDa (251aa) confirmed by MALDI-TOF (Molecular weight on SDS-PAGE will appear higher)

Concentration

0.5mg/ml (determined by Bradford assay)

Formulation

Liquid in. 20mM Tris-HCl buffer (pH 8.0) containing 0.1M NaCl, 10% glycerol, 1mM DTT

Purity

> 90% by SDS-PAGE

Tag

His-Tag

Application

SDS-PAGE

Storage Condition

Can be stored at +2C to +8C for 1 week. For long term storage, aliquot and store at -20C to -80C. Avoid repeated freezing and thawing cycles.

BACKGROUND

Description

Ovarian tumor suppressor candidate 2, also known as OVCA2, belongs to the uPF0483 family. It is ubiquitously expressed and its expression is regulated by retinoids. OVCA2 interacts with apoptosis-related protein Bag-1, indicating that this protein may participate in cell proliferation. Due to its structural and catalytic characteristics, OVCA2 is thought to act as a serine-hydrolase and, because of its reduced expression in ovarian and other tumor cell lines, it may play a role in tumor suppression. Recombinant human OVCA2 protein, fused to His-tag at N-terminus, was expressed in E. coli and purified by using conventional chromatography techniques.

Recombinant human OVCA2 protein

Catalog Number: ATGP1618

Amino acid Sequence

MGSSHHHHHHH SSGLVPRGSH MGSHEMAARQP LRVLCLAGFR QSERGFREKT GALRKALRGR AELVCLSGPH PVPDPPGPEG
ARSDFGSCPP EEQPRGWWFS EQEADVFSAL EEPAVCRGLE ESLGMVAQAL NRLGPFDDL GFSQGAALAA LVCALGQAGD
PRFPLPRFIL LVSGFCPRGI GFKESILQRP LSLPSLHVFG DTDKVIPSQE SVQLASQFPG AITLTHSGGH FIPAAAPQRQ
AYLKFLDQFA E

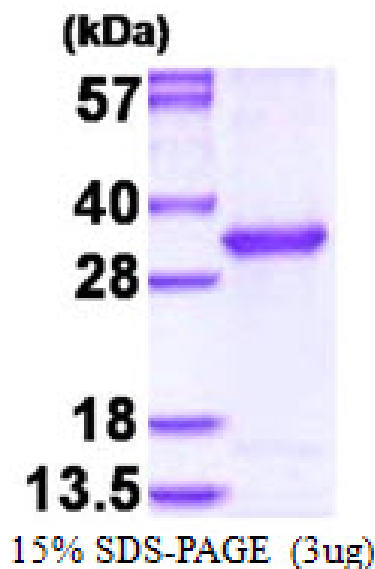
General References

Azizi A A., et al. (2006) Cancer Lett. 241(2):235-49.

Prowse A H., et al. (2002) Int J Cancer. 99(2): 185-92.

DATA

SDS-PAGE



3ug by SDS-PAGE under reducing condition and visualized by coomassie blue stain.