

Recombinant human Crystallin gamma N/CRYGN protein

Catalog Number: ATGP1627

PRODUCT INFORMATION

Expression system

E.coli

Domain

1-182aa

UniProt No.

Q8WXF5

NCBI Accession No.

NP_653328

Alternative Names

Gamma-crystallin N, Gamma-N-crystallin

PRODUCT SPECIFICATION

Molecular Weight

23.1 kDa (206aa)

Concentration

1mg/ml (determined by Bradford assay)

Formulation

Liquid in. 20mM Tris-HCl buffer (pH 8.0) containing 0.4M urea, 10% glycerol

Purity

> 90% by SDS-PAGE

Tag

His-Tag

Application

SDS-PAGE, Denatured

Storage Condition

Can be stored at +2C to +8C for 1 week. For long term storage, aliquot and store at -20C to -80C. Avoid repeated freezing and thawing cycles.

BACKGROUND

Description

Crystallin, gamma N, also known as CRYGN, belongs to the Crystallins family. Crystallins are divided into alpha, beta and gamma families, and the beta and gamma-crystallins also comprise a superfamily. Crystallins are the major proteins of the vertebrate eye lens, where they maintain the transparency and refractive index of the lens. The CRYGN is differentially regulated after early development, and are involved in cataract formation as a result of either age-related protein degradation or genetic mutation. Recombinant human CRYGN protein, fused to His-tag at N-terminus, was expressed in E. coli.

Recombinant human Crystallin gamma N/CRYGN protein

Catalog Number: ATGP1627

Amino acid Sequence

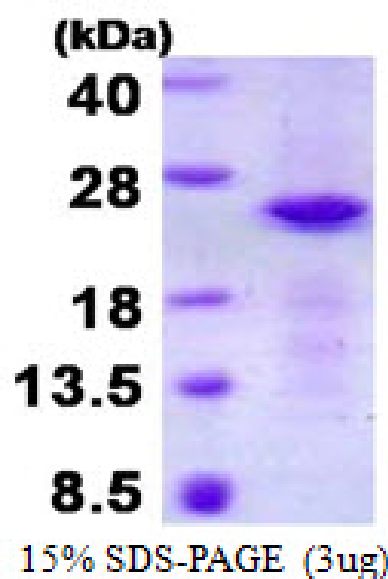
MGSSHHHHHH SGLVPRGSH MGSHEMAQRSG KITLYEGKHF TGQKLEVFGD CDNFDQDRGFM NRVNSIHVES
GAWVCFNHPD FRGQQFILEH GDYPDFFRWN SHSDHMGSCR PVGMHGEHFR LEIFEGCNFT GQCLEFLEDS
PFLQSRGWVK NCVNTIKVYG DGAAWSRPSF GAEDFQLSSS LQSDQGPEEA TTKPATTQPP FLTANL

General References

Srivastava O P., et al. (1998) Curr Eye Res. 17:1074-1081.
Srivastava O P., et al. (1998) Biophys Res Commun. 253:288-294.

DATA

SDS-PAGE



3ug by SDS-PAGE under reducing condition and visualized by coomassie blue stain.