

Recombinant human LDOC1L/RTL6 protein

Catalog Number: ATGP1629

PRODUCT INFORMATION

Expression system

E.coli

Domain

1-239aa

UniProt No.

Q6ICC9

NCBI Accession No.

NP_115663

Alternative Names

Protein LDOC1L, dj1033E15.2, Mar6, Mart6

PRODUCT SPECIFICATION

Molecular Weight

28.7 kDa (263aa) confirmed by MALDI-TOF

Concentration

0.5mg/ml (determined by Bradford assay)

Formulation

Liquid in. 20mM Tris-HCl buffer (pH 8.0) containing 0.1M NaCl, 40% glycerol, 2mM DTT, 0.1mM PMSF, 1mM EDTA

Purity

> 90% by SDS-PAGE

Tag

His-Tag

Application

SDS-PAGE

Storage Condition

Can be stored at +2C to +8C for 1 week. For long term storage, aliquot and store at -20C to -80C. Avoid repeated freezing and thawing cycles.

BACKGROUND

Description

Leucine zipper, down-regulated in cancer 1-like, also known as LDOC1L, belongs to the LDOC1 family. LDOC1 is a nuclear protein that contains a leucine zipper-like motif and a proline-rich region that shares marked similarity with an SH3-binding domain. The protein localizes to the nucleus and is downregulated in some cancer cell lines. LDOC1L is thought to regulate the transcriptional response mediated by the nuclear factor kB (NFkB). Recombinant human LDOC1L protein, fused to His-tag at N-terminus, was expressed in E. coli and purified by using conventional chromatography techniques.

Recombinant human LDOC1L/RTL6 protein

Catalog Number: ATGP1629

Amino acid Sequence

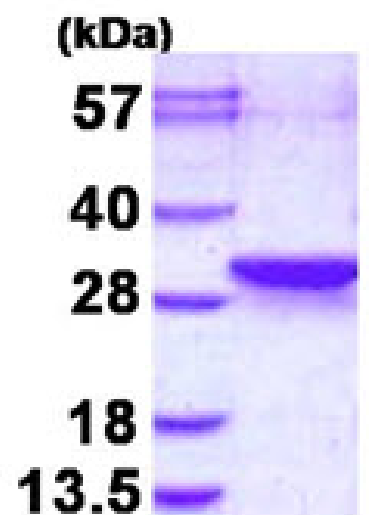
MGSSHHHHHH SSSLVPRGSH MGSMMVQPQT SKAESPALAA SPNAQMDDVI DTLTSLRLTN SALRREASTL RAEKANLTNM
LESVMAELTL LRTRARIPGA LQITPPISSI TSNGTRPMTT PPTSLPEPFS GDPGRLAGFL MQMDRFMIFQ ASRFPGEAER
VAFLVSRITG EAEKWAIPHM QPDSPLRNYY QGFLAELRRT YKSPLRHARR AQIRKTSASN RAVRERQMLC RQLASAGTGP
CPVHPASNGT SPAPALPARA RNL

General References

Nagasaki K., et al. (1999) Cancer Lett. 140: 227-234
Nagasaki K., et al. (2003) J Cancer. 105: 454-458.

DATA

SDS-PAGE



3ug by SDS-PAGE under reducing condition and visualized by coomassie blue stain.

15% SDS-PAGE (3ug)