

Recombinant E.coli D-lactate dehydrogenase/LDHA protein

Catalog Number: ATGP1634

PRODUCT INFORMATION

Expression system

E.coli

Domain

1-329aa

UniProt No.

P52643

NCBI Accession No.

NP_415898

Alternative Names

NAD-dependent, JW1375, htpH, hslI, hslF, Fermentative D-lactate dehydrogenase, ECK1377

PRODUCT SPECIFICATION

Molecular Weight

39.1 kDa (353aa) confirmed by MALDI-TOF

Concentration

1mg/ml (determined by Bradford assay)

Formulation

Liquid in. 20mM Tris-HCl buffer (pH 8.0) containing 10% glycerol, 100mM NaCl

Purity

> 95% by SDS-PAGE

Tag

His-Tag

Application

SDS-PAGE

Storage Condition

Can be stored at +2C to +8C for 1 week. For long term storage, aliquot and store at -20C to -80C. Avoid repeated freezing and thawing cycles.

BACKGROUND

Description

ldha, also known as D-lactate dehydrogenase, belongs to the D-isomer specific 2-hydroxyacid dehydrogenase family. In enzymology, a D-lactate dehydrogenase (cytochrome) is an enzyme that catalyzes the chemical reaction. Thus, the two substrates of this enzyme are (D) -lactate and ferricytochrome c, whereas its two products are pyruvate and ferrocycytochrome c. Recombinant E. coli IdhA protein, fused to His-tag at N-terminus, was expressed in E. coli and purified by using conventional chromatography techniques.

Recombinant E.coli D-lactate dehydrogenase/LDHA protein

Catalog Number: ATGP1634

Amino acid Sequence

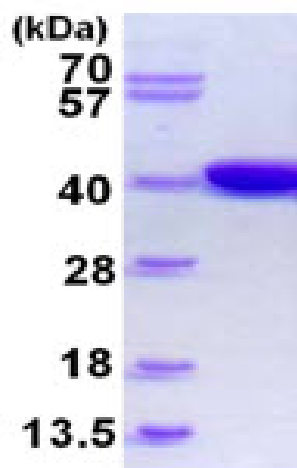
MGSSHHHHHHH SSGLVPRGSH MGSHMKLAVY STKQYDKKYL QQVNESFGFE LEFFDFLLTE KTAKTANGCE AVCIFVNDG
SRPVLEELKK HGVKYLALRC AGFNNVDLDA AKELGLKVVR VPAYDPEAVA EHAIGMMMTL NRRIHRAYQR TRDANFSLEG
LTGFTMYGKT AGVIGTGKIG VAMLRILKGF GMRLLAFFDPY PSAAALELGV EYVDLPTLFS ESDVISLHCP LTPENYHLLN
EAAFEQMKNQ VMIVNTRGA LIDSQAAIEA LKNQKIGSLG MDVYENERDL FFEDKSNDVI QDDVFRRLSA CHNVLFTGHQ
AFLTAEALTS ISQTTLQNLN NLEKGETCPN ELV

General References

Atlante, A., et al. (2005) *Biochim. Biophys. Acta* 1708 (1): 13-22.
Martin Engqvist, et al. (2009) *J Biol Chem.* 284 (September 11): 25026-25037.

DATA

SDS-PAGE



3ug by SDS-PAGE under reducing condition and visualized by coomassie blue stain.

15% SDS-PAGE (3ug)