

# Recombinant human TTC1 protein

Catalog Number: ATGP1641

## PRODUCT INFORMATION

---

### Expression system

E.coli

### Domain

1-292aa

### UniProt No.

Q99614

### NCBI Accession No.

NP\_003305

### Alternative Names

Tetratricopeptide repeat protein 1, TPR1

## PRODUCT SPECIFICATION

---

### Molecular Weight

36.1 kDa (316aa) confirmed by MALDI-TOF (Molecular weight on SDS-PAGE will appear higher)

### Concentration

1mg/ml (determined by Bradford assay)

### Formulation

Liquid in. 20mM Tris-HCl buffer (pH 8.0) containing 20% glycerol, 0.1M NaCl, 1mM DTT

### Purity

> 85% by SDS-PAGE

### Tag

His-Tag

### Application

SDS-PAGE

### Storage Condition

Can be stored at +2C to +8C for 1 week. For long term storage, aliquot and store at -20C to -80C. Avoid repeated freezing and thawing cycles.

## BACKGROUND

---

### Description

TTC1, also known as tetratricopeptide repeat protein 1, is composed of 292 amino acids with three TPR motifs, as a Galpha16-binding protein. The interaction was confirmed both in vitro and in transfected mammalian cells, where TTC1 also binds to several other Galpha proteins. TTC1 was found to interact with Ha-Ras preferentially in its active form. Recombinant human TTC1 protein, fused to His-tag at N-terminus, was expressed in E. coli and purified by using conventional chromatography.

# Recombinant human TTC1 protein

Catalog Number: ATGP1641

## Amino acid Sequence

MGSSHHHHHH SGLVPRGSH MGSHMGEKSE NCGVPEDLLN GLKVTDQTQA ECAGPPVPDP KNQHSQSKL  
RDDEAHLQED QGEEECFHDC SASFEEEPGA DKVENKSNED VNSSELDEEY LIELEKNMSD EEKQKRREES TRLKEEGNEQ  
FKKGDYIEAE SSYSRALEMC PSCFQKERSI LFSNRAAARM KQDKKEMAIN DCSKAIQLNP SYIRAILRRA ELYEKTDKLD  
EALEDYKSIL EKDPSIHQAR EACMRLPKQI EERNERLKEE MLGKLDLGN LVLRFGLST ENFQIKQDSS TGSYSINLVQ  
NPNNNR

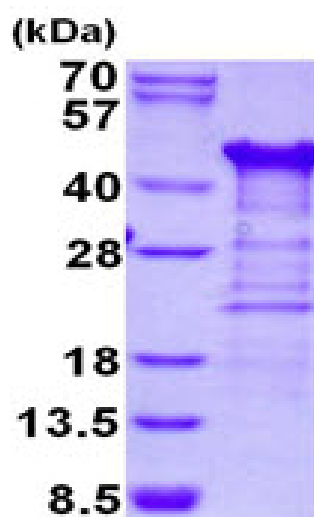
## General References

Liu AM., et al. (2011) BMC Struct Biol. 13  
11:17

Strausberg RL., et al. (2007) Proc. Natl. Acad. Sci. u.S.A. 26:16899-16903

## DATA

### SDS-PAGE



3ug by SDS-PAGE under reducing condition and visualized by coomassie blue stain.

15% SDS-PAGE (3ug)