

Recombinant human GCLM protein

Catalog Number: ATGP1657

PRODUCT INFORMATION

Expression system

E.coli

Domain

1-274aa

UniProt No.

P48507

NCBI Accession No.

NP_002052

Alternative Names

Glutamate-cysteine ligase modifier subunit, Glutamate-cysteine ligase, modifier subunit, GLCLR

PRODUCT SPECIFICATION

Molecular Weight

33.3 kDa (298aa) confirmed by MALDI-TOF

Concentration

1mg/ml (determined by Bradford assay)

Formulation

Liquid in. 20mM Tris-HCl buffer (pH 8.0) containing 10% glycerol, 0.15M NaCl

Purity

> 90% by SDS-PAGE

Tag

His-Tag

Application

SDS-PAGE

Storage Condition

Can be stored at +2C to +8C for 1 week. For long term storage, aliquot and store at -20C to -80C. Avoid repeated freezing and thawing cycles.

BACKGROUND

Description

Glutamate-cysteine ligase, also known as gamma-glutamylcysteine synthetase, is the first rate limiting enzyme of glutathione synthesis. The enzyme consists of two subunits, a heavy catalytic subunit and a light regulatory subunit. Gamma glutamylcysteine synthetase deficiency has been implicated in some forms of hemolytic anemia. Recombinant human GCLM protein, fused to His-tag at N-terminus, was expressed in E. coli and purified by using conventional chromatography techniques.

Recombinant human GCLM protein

Catalog Number: ATGP1657

Amino acid Sequence

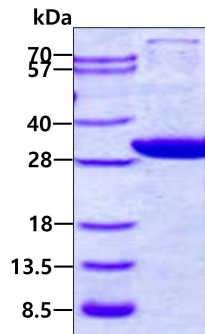
<MGSSHHHHH SSGLVPRGSH MGS>MGTDSR AAKALLARAR TLHLQTGNLL NWGRLRKKCP STHSEELHDC
IQKTLNEWSS QINPDLVREF PDVLECTVSH AVEKINPDER EEMKVSALF IVESNSSST RSAVDMACSV LGVAQLDSVI
IASPPIEDGV NLSLEHLQPY WEELENLVQS KKIVAIGTSD LDKTQLEQLY QWAQVKPNSN QVNLASCCVM PDLTAFKQ
FDIQLLTHND PKELLSEASF QEALQESIPD IQAHEWVPLW LLRYSVIVKS RGIKSKGYI LQAKRRGS

General References

Hanzawa,R., et al. (2011) Psychiatry Clin. Neurosci. 65 (1), 39-46

DATA

SDS-PAGE



3ug by SDS-PAGE under reducing condition and visualized by coomassie blue stain.