

# Recombinant human CSTF1 protein

Catalog Number: ATGP1659

## PRODUCT INFORMATION

---

### Expression system

E.coli

### Domain

1-431aa

### UniProt No.

Q05048

### NCBI Accession No.

NP\_001028693

### Alternative Names

Cleavage stimulation factor subunit 1, CstF-50, CstFp50

## PRODUCT SPECIFICATION

---

### Molecular Weight

49.4 kDa (439aa)

### Concentration

1mg/ml (determined by Bradford assay)

### Formulation

Liquid in. 20mM Tris-HCl buffer (pH 8.0) containing 20% glycerol, 0.1M NaCl, 2M urea

### Purity

> 90% by SDS-PAGE

### Tag

His-Tag

### Application

SDS-PAGE, Denatured

### Storage Condition

Can be stored at +2C to +8C for 1 week. For long term storage, aliquot and store at -20C to -80C. Avoid repeated freezing and thawing cycles.

## BACKGROUND

---

### Description

CSTF1, also known as cleavage stimulation factor subunit 1, is involved in the polyadenylation and 3'end cleavage of pre-mRNAs. Similar to mammalian G protein beta subunits, this protein contains transducin-like repeats. Several transcript variants with different 5' uTR, but encoding the same protein, have been found for this gene. Recombinant human CSTF1 protein, fused to His-tag at C-terminus, was expressed in E. coli.

### Amino acid Sequence

MYRTKVGLKD RQQLYKLIIS QLLYDGYISI ANGLINEIKP QSVCAPSEQL LHLIKLGMEN DDTAVQYAIG RSDTVAPGTG

## Recombinant human CSTF1 protein

Catalog Number: ATGP1659

IDLEFDADVQ TMSPEASEYE TCYVTSKGP CRVATYSRDG QLIATGSADA SIKILDTERM LAKSAMPIEV MMNETAQQNM  
ENHPVIRTLY DHVDEVTCLA FHPTEQILAS GSRDYTLKLF DYSKPSAKRA FKYIQEAEML RSISFHPSGD FILVGTQHPT  
LRLYDINTFQ CFVSCNPQDQ HTDAICSVNY NSSANMYVTG SKDGCILWD GVSNRCITTF EKAHDGAEVC SAIFSKNSKY  
ILSSGKDSVA KLWEISTGRT LVRYTGAGLS GRQVHRTQAV FNHTEDYVLL PDERTISLCC WDSRTAERRN LLSLGHNNIV  
RCIVHSPTNP GFMTCSDDFR ARFWYRRSTT DVEHHHHHH

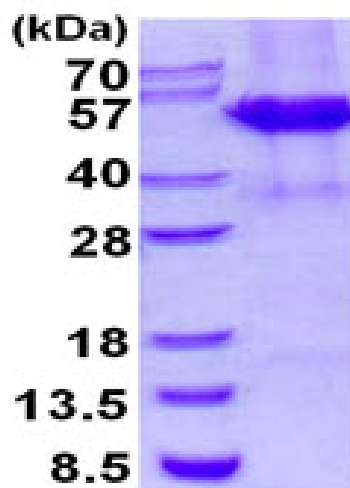
### General References

Rush J., et al. (2005) Nat. Biotechnol. 23:94-101

Takagaki Y., et al. (2000) Mol. Cell. Biol. 20:1515-1525

### DATA

#### SDS-PAGE



3ug by SDS-PAGE under reducing condition and visualized by coomassie blue stain.

15% SDS-PAGE (3ug)