

# Recombinant human OLA1 protein

Catalog Number: ATGP1660

## PRODUCT INFORMATION

---

### Expression system

E.coli

### Domain

1-396aa

### UniProt No.

Q9NTK5

### NCBI Accession No.

NP\_037473

### Alternative Names

Obg-like ATPase 1, DOC45, GBP45, GTBP9, GTPBP9, PTD004

## PRODUCT SPECIFICATION

---

### Molecular Weight

47.3 kDa (420aa) confirmed by MALDI-TOF

### Concentration

1mg/ml (determined by Bradford assay)

### Formulation

Liquid in. 20mM Tris-HCl buffer (pH 8.0) containing 10% glycerol, 0.1M NaCl

### Purity

> 95% by SDS-PAGE

### Tag

His-Tag

### Application

SDS-PAGE

### Storage Condition

Can be stored at +2C to +8C for 1 week. For long term storage, aliquot and store at -20C to -80C. Avoid repeated freezing and thawing cycles.

## BACKGROUND

---

### Description

OLA1, also known as obg-like ATPase 1, functions as a negative regulator of the cellular antioxidant response independent of transcriptional processes. OLA1 suppresses the antioxidant response through nontranscriptional mechanisms. Recombinant human OLA1 protein, fused to His-tag at N-terminus, was expressed in E. coli and purified by using conventional chromatography.

### Amino acid Sequence

MGSSHHHHHH SGLVPRGSH MGSHPKKG GDGIKPPPII GRFGTSLKIG IVGLPNVGKS TFFNVLTSQ ASAENFPFCT

# Recombinant human OLA1 protein

Catalog Number: ATGP1660

IDPNESRVPV PDERFDFLCQ YHKPASKIPA FLNVVDIAGL VKGAHNGQGL GNAFLSHISA CDGIFHLTRA FEDDDITHVE  
GSVDPIRDIE IIHEELQLKD EEMIGPIIDK LEKVAVRGGD KKLKPEYDIM CKVKSVIDQ KKPVRFYHDW NDKEIEVLNK  
HLFLTSPMV YLVNLSEKDY IRKKNKWLK IKEWVDKYDP GALVIPFSGA LELKLQELSA EERQKYLEAN MTQSALPKII  
KAGFAALQLE YFFTAGPDEV RAWTIRKGTK APQAAGKIHT DFEKGFIMAE VMKYEDFKEE GSENAVKAAG KYRQQGRNYI  
VEDGDIIFFK FNTPQQPKK

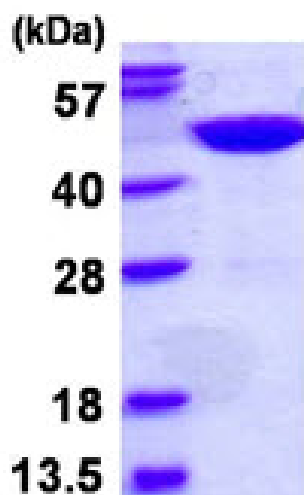
## General References

Choudhary C., et al. (2009) Science. 325:834-840

Koller-Eichhorn R., et al. (2007) J. Biol. Chem. 282:19928-19937

## DATA

### SDS-PAGE



3ug by SDS-PAGE under reducing condition and visualized by coomassie blue stain.

15% SDS-PAGE (3ug)