

Recombinant human BIM/BCL2L11 protein

Catalog Number: ATGP1661

PRODUCT INFORMATION

Expression system

E.coli

Domain

1-138aa

UniProt No.

O43521

NCBI Accession No.

NP_006529.1

Alternative Names

BCL2-like 11, BAM, BIM, BIM-alpha6, BIM-beta6, BIM-beta7, BimEL, BimL, BOD

PRODUCT SPECIFICATION

Molecular Weight

18.5 kDa (162aa)

Concentration

0.5mg/ml (determined by Bradford assay)

Formulation

Liquid in. 20mM Tris-HCl buffer (pH 8.0) containing 2M urea, 20% glycerol 5mM DTT, 300mM NaCl

Purity

> 80% by SDS-PAGE

Tag

His-Tag

Application

SDS-PAGE, Denatured

Storage Condition

Can be stored at +2C to +8C for 1 week. For long term storage, aliquot and store at -20C to -80C. Avoid repeated freezing and thawing cycles.

BACKGROUND

Description

BCL2L11 (Bcl-2-like protein 11) belongs to the Bcl-2 family. BCL-2 family members form hetero- or homodimers and act as anti- or pro-apoptotic regulators that are involved in a wide variety of cellular activities. The expression of BCL2L11 can be induced by nerve growth factor (NGF), as well as by the forkhead transcription factor FKHR-L1, which suggests a role of this gene in neuronal and lymphocyte apoptosis. Isoform BimEL, isoform BimL and isoform BimS are the predominant isoforms and are ubiquitously expressed with a tissue-specific variation. Isoform Bim-gamma is most abundantly expressed in small intestine and colon, and in lower levels in

Recombinant human BIM/BCL2L11 protein

Catalog Number: ATGP1661

spleen, prostate, testis, heart, liver and kidney. Recombinant human BCL2L11 protein, fused to His-tag at N-terminus, was expressed in *E. coli*.

Amino acid Sequence

<MGSSHHHHHH SSGLVPRGSH MGSH>MAKQPS DVSSECDREG RQLQPAERPP QLRPGAPTSL QTEPQDRSPA
PMSCDKSTQT PSPPCQAFNH YLSAMASMRQ AEPADMRPEI WIAQELRRIG DEFNAYYARR VFLNNYQAAE DHPRMVILRL
LRYIVRLVWR MH

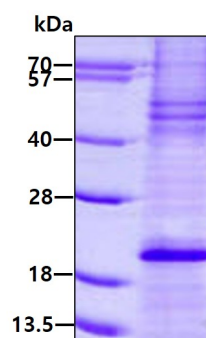
General References

O'Connor L, et al. (1998). *EMBO J* 17 (2): 384-95.

Liu J.-W., et al. (2002) *Cancer Res.* 62:2976-2981

DATA

SDS-PAGE



3ug by SDS-PAGE under reducing condition and visualized by coomassie blue stain.