

Recombinant human SYCE3 protein

Catalog Number: ATGP1672

PRODUCT INFORMATION

Expression system

E.coli

Domain

1-88aa

UniProt No.

A1L190

NCBI Accession No.

NP_001116697

Alternative Names

synaptonemal complex central element protein 3, testis highly expressed protein 2, C22orf41, chromosome 22 open reading frame 41, THEG-2, THEG2, SYCE-3

PRODUCT SPECIFICATION

Molecular Weight

12.8 kDa (108aa) confirmed by MALDI-TOF

Concentration

0.5mg/ml (determined by Bradford assay)

Formulation

Liquid in. 20mM Tris-HCl buffer (pH 8.0) containing 0.2M NaCl, 20% glycerol, 2mM DTT

Purity

> 90% by SDS-PAGE

Tag

His-Tag

Application

SDS-PAGE

Storage Condition

Can be stored at +2C to +8C for 1 week. For long term storage, aliquot and store at -20C to -80C. Avoid repeated freezing and thawing cycles.

BACKGROUND

Description

SYCE3 (synaptonemal complex central element protein 3) is major component of the transverse central element of synaptonemal complexes (SCS). The synaptonemal complex is a protein structure that forms between homologous chromosomes (two pairs of sister chromatids) during meiosis and that is thought to mediate chromosome pairing, synapsis, and recombination (crossing-over). This protein required for chromosome loading of the central element-specific SCS proteins, and for initiating synapsis between homologous chromosomes.

Recombinant human SYCE3 protein

Catalog Number: ATGP1672

Recombinant human SYCE3 protein, fused to His-tag at N-terminus, was expressed in E. coli and purified by using conventional chromatography techniques.

Amino acid Sequence

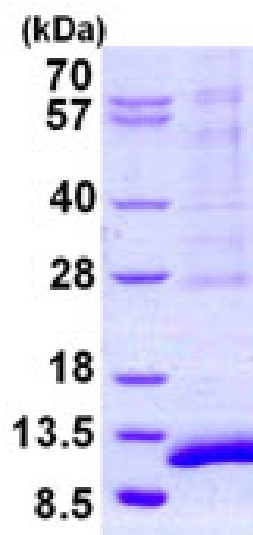
MGSSHHHHHHH SGLVPRGSH MDDADPEERN YDNMLKMLSD LNKDLEKLE EMEKISVQAT WMAYDMVVMR
TNPTLAESMR RLEDAFVNCK EEMEKNWQEL LHETKQRL

General References

Schramm S, et al. (2011) PLoS Genet, May
7(5):e1002088

DATA

SDS-PAGE



3ug by SDS-PAGE under reducing condition and visualized by coomassie blue stain.

15% SDS-PAGE (3ug)