

# Recombinant human TBCC protein

Catalog Number: ATGP1673

## PRODUCT INFORMATION

---

### Expression system

E.coli

### Domain

1-346aa

### UniProt No.

Q15814

### NCBI Accession No.

NP\_003183

### Alternative Names

Tubulin-specific chaperone C, CFC, tubulin folding cofactor C

## PRODUCT SPECIFICATION

---

### Molecular Weight

41.7 kDa (369aa) confirmed by MALDI-TOF

### Concentration

0.5mg/ml (determined by Bradford assay)

### Formulation

Liquid in. 20mM Tris-HCl buffer (pH 8.0) containing 0.1M NaCl, 10% glycerol, 1mM DTT

### Purity

> 85% by SDS-PAGE

### Tag

His-Tag

### Application

SDS-PAGE

### Storage Condition

Can be stored at +2C to +8C for 1 week. For long term storage, aliquot and store at -20C to -80C. Avoid repeated freezing and thawing cycles.

## BACKGROUND

---

### Description

TBCC (tubulin folding cofactor C) belongs to the TBCC family. It plays a role in the regulation of centrosome and Golgi apparatus positioning, with consequences on cell shape and cell migration. Cofactor C is one of four proteins (cofactors A, D, E and C) involved in the pathway leading to correctly folded b-tubulin from folding intermediates. Cofactors A and D are believed to play a role in capturing and stabilizing b-tubulin intermediates in a quasi-native confirmation. Cofactor E binds to the cofactor D/b-tubulin complex; interaction with cofactor C then causes the release of b-tubulin polypeptides. Recombinant human TBCC protein, fused to His-tag at N-

# Recombinant human TBCC protein

Catalog Number: ATGP1673

terminus, was expressed in E. coli and purified by using conventional chromatography techniques.

## Amino acid Sequence

<MGSSHHHHHH SSGLVPRGSH MGS>MESVSCS AAVRTGDME SQRDLSLVPE RLQRREQERQ LEVERRKQKR  
QNQEVEKENS HFFVATFARE RAAVEELLER AESVERLEEA ASRLQGLQKL INDSVFFLAA YDLRQGQEAL ARLQAALAER  
RRGLQPKKRF AFKTRGKDA SSKVDAAPG IPPAVESIQA SPLPKAEGD LGPSWVCGFS NLESQVLEKR ASELHQRDVL  
LTELSNCTVR LYGNPNTLRL TKAHSCKLLC GPVSTSVFLE DCSDCVLAVA CQQLRIHSTK DTRIFLQVTS RAIVEDCSGI  
QFAPYTWSYP EIDKDFESSG LDRSKNNWWD VDDFNWLARD MASPNSILP EEERNIQWD

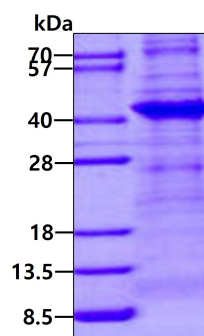
## General References

Goncalves J., et al. (2010) EMBO Rep. 11:194-200

Lewis SA, et al. (1996). J. Cell Biol. 132 (1-2): 1-4.

## DATA

### SDS-PAGE



3ug by SDS-PAGE under reducing condition and visualized by coomassie blue stain.