

# Recombinant human TULP1 protein

Catalog Number: ATGP1680

## PRODUCT INFORMATION

---

### Expression system

E.coli

### Domain

290-542aa

### UniProt No.

O00294

### NCBI Accession No.

NP\_003313.3

### Alternative Names

Tubby-related protein 1, LCA15, RP14, TuBL1

## PRODUCT SPECIFICATION

---

### Molecular Weight

31.1 kDa (276aa) confirmed by MALDI-TOF

### Concentration

1mg/ml (determined by Bradford assay)

### Formulation

Liquid in. 20mM Tris-HCl buffer (pH 8.0) containing 0.2M NaCl, 50% glycerol, 5mM DTT, 2mM EDTA

### Purity

> 90% by SDS-PAGE

### Tag

His-Tag

### Application

SDS-PAGE

### Storage Condition

Can be stored at +2C to +8C for 1 week. For long term storage, aliquot and store at -20C to -80C. Avoid repeated freezing and thawing cycles.

## BACKGROUND

---

### Description

Tubby-related protein 1, also known as TuLP1, is a member of the TuLP family of four proteins (TuB and TuLP1, -2, and -3), characterized structurally by the highly conserved C-terminal half of the protein. In the retina, TuLP1 is found exclusively in photoreceptor cells, localizing primarily in the inner segments and connecting cilium and to a lesser extent in the perinuclear cytoplasm and synaptic termini. Recombinant human TuLP1 protein, fused to His-tag at N-terminus, was expressed in E. coli and purified by using conventional chromatography techniques.

## Recombinant human TULP1 protein

Catalog Number: ATGP1680

### Amino acid Sequence

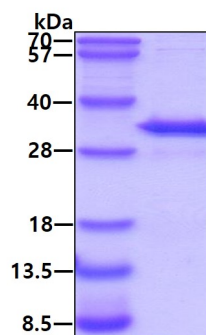
<MGSSHHHHHH SSGLVPRGSH MGS>EPREFVL RPAPQGRTVR CRLTRDKKGM DRGMYPYFL HLDTEKKVFL  
LAGRKRKRSK TANYLISIDP TNLSRGGGENF IGKLRNLLG NRFTVFDNGQ NPQRGYSTNV ASLRQELAAV IYETNVLGFR  
GPRRMTVIIP GMSAENERVP IRPRNASDGL LVRWQNKLE SLIELHNKPP VWNDDSGSYT LNFQGRVTQA SVKNFQIVHA  
DDPDYIVLQF GRVAEDAFTL DYRYPLCALQ AFAIALSSFD GKLACE

### General References

Xi Q., et al. (2005) Invest. Ophthalmol. Vis. Sci. 46:4754-4761  
Caberoy N.B., et al. (2010) Exp. Cell Res. 316:245-257

## DATA

### SDS-PAGE



3 $\mu$ g by SDS-PAGE under reducing condition and visualized by coomassie blue stain.