

Recombinant human Ubch10/UBE2C protein

Catalog Number: ATGP1681

PRODUCT INFORMATION

Expression system

E.coli

Domain

1-179aa

UniProt No.

O00762

NCBI Accession No.

NP_008950

Alternative Names

Ubiquitin-conjugating enzyme E2 C, E2 ubiquitin-conjugating enzyme C, Ubch10, Ubiquitin carrier protein C, Ubiquitin-protein ligase C

PRODUCT SPECIFICATION

Molecular Weight

22.1 kDa (202aa) confirmed by MALDI-TOF

Concentration

1mg/ml (determined by Bradford assay)

Formulation

Liquid in. 20mM Tris-HCl buffer (pH 8.0) containing 0.15M NaCl, 10% glycerol, 1mM DTT

Purity

> 90% by SDS-PAGE

Tag

His-Tag

Application

SDS-PAGE

Storage Condition

Can be stored at +2C to +8C for 1 week. For long term storage, aliquot and store at -20C to -80C. Avoid repeated freezing and thawing cycles.

BACKGROUND

Description

ubiquitin-conjugating enzyme E2 C, also known as uBE2C, is a member of the E2 ubiquitin-conjugating enzyme family. This enzyme is required for the destruction of mitotic cyclins and for cell cycle progression. It accepts ubiquitin from the E1 complex and catalyzes its covalent attachment to other proteins. Recombinant human uBE2C protein, fused to His-tag at N-terminus, was expressed in E. coli and purified by using conventional chromatography techniques.

Recombinant human Ubch10/UBE2C protein

Catalog Number: ATGP1681

Amino acid Sequence

MGSSHHHHHH SSSLVPRGSH MGSMASQNRD PAATSVAAAR KGAEPSSGAA RGPVGRRLQQ ELMTLMMSGD
KGISAFPESD NLFKWVGTIH GAAGTVYEDL RYKLSLEFPS GYPYNAPTvk FLTPCYHPNV DTQGNICLDI LKEKWSALYD
VRTILLSIQS LLGEPNIDSP LNTHAAELWK NPTAFKKYLQ ETYSKQVTSQ EP

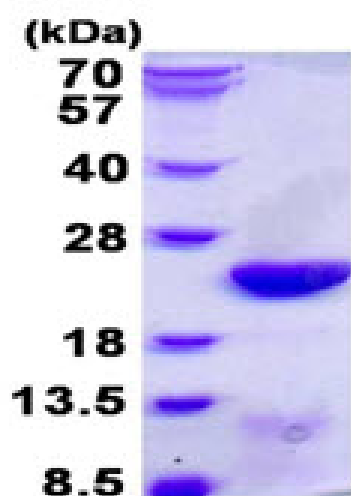
General References

Okamoto Y., et al. (2003) Cancer Res. 63:4167-4173

Wagner K.W., et al. (2004) Oncogene. 23:6621-6629

DATA

SDS-PAGE



3ug by SDS-PAGE under reducing condition and visualized by coomassie blue stain.

15% SDS-PAGE (3ug)