

# Recombinant human CREG/CREG1 protein

Catalog Number: ATGP1689

## PRODUCT INFORMATION

---

### Expression system

E.coli

### Domain

32-220aa

### UniProt No.

O75629

### NCBI Accession No.

NP\_003842

### Alternative Names

Cellular repressor of E1A-stimulated genes 1, CREG

## PRODUCT SPECIFICATION

---

### Molecular Weight

23.6 kDa (213aa) confirmed by MALDI-TOF

### Concentration

1mg/ml (determined by Bradford assay)

### Formulation

Liquid in. 20mM Tris-HCl buffer (pH 8.0) containing 0.15M NaCl, 10% glycerol

### Purity

> 95% by SDS-PAGE

### Tag

His-Tag

### Application

SDS-PAGE

### Storage Condition

Can be stored at +2C to +8C for 1 week. For long term storage, aliquot and store at -20C to -80C. Avoid repeated freezing and thawing cycles.

## BACKGROUND

---

### Description

CREG1 both activates and represses gene expression to promote cellular proliferation and inhibit differentiation. This protein antagonizes transcriptional activation and cellular transformation by E1A. It shares limited sequence similarity with E1A and binds both the general transcription factor TBP and the tumor suppressor pRb in vitro. CREG1 may contribute to the transcriptional control of cell growth and differentiation. Recombinant human CREG1 protein, fused to His-tag at N-terminus, was expressed in E. coli and purified by using conventional chromatography techniques.

## Recombinant human CREG/CREG1 protein

Catalog Number: ATGP1689

### Amino acid Sequence

MGSSHHHHHHH SSGLVPRGSH MGSMRGGRDH GDWDEASRLP PLPPREDAAR VARFVTHVSD WGALATISTL  
EAVRGRPFAD VLSLSDGPPG AGSGVPYFYI SPLQLSVSNL QENPYATLTM TLAQTNFCKK HGFDPQSPLC VHIMLSGTVT  
KVNEMEDIA KHSLFIRHPE MKTWPSSHNW FFAKLNITNI WVLDYFGGPK IVTPEEYYNV TVQ

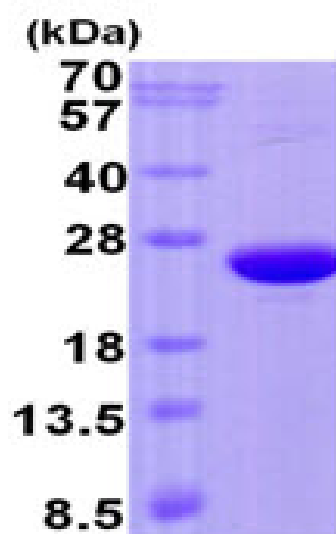
### General References

Wang,N., et al. (2011) Atherosclerosis 218 (2), 543-551

Han,Y.,et al. (2011) J. Mol. Cell. Cardiol. 50 (4), 723-730

## DATA

### SDS-PAGE



3ug by SDS-PAGE under reducing condition and visualized by coomassie blue stain.

15% SDS-PAGE (3ug)