

Recombinant human UbchH6/UBE2E1 protein

Catalog Number: ATGP1690

PRODUCT INFORMATION

Expression system

E.coli

Domain

1-193aa

UniProt No.

P51965

NCBI Accession No.

NP_003332

Alternative Names

Ubiquitin-conjugating enzyme E2 E1, E2 ubiquitin-conjugating enzyme E1, UbchH6, Ubiquitin carrier protein E1, Ubiquitin-protein ligase E1

PRODUCT SPECIFICATION

Molecular Weight

23.8 kDa (216aa) confirmed by MALDI-TOF

Concentration

1mg/ml (determined by Bradford assay)

Formulation

Liquid in. 20mM Tris-HCl buffer (pH 8.0) containing 0.15M NaCl, 20% glycerol

Purity

> 90% by SDS-PAGE

Tag

His-Tag

Application

SDS-PAGE

Storage Condition

Can be stored at +2C to +8C for 1 week. For long term storage, aliquot and store at -20C to -80C. Avoid repeated freezing and thawing cycles.

BACKGROUND

Description

The modification of proteins with ubiquitin is an important cellular mechanism for targeting abnormal or short-lived proteins for degradation. ubiquitination involves at least three classes of enzymes: ubiquitin-activating enzymes, or E1s, ubiquitin-conjugating enzymes, or E2s, and ubiquitin-protein ligases, or E3s. uBE2E1 is a member of the E2 ubiquitin-conjugating enzyme family. Two alternatively spliced transcript variants encoding distinct isoforms have been found for this gene. Recombinant human uBE2E1 protein, fused to His-tag at N-

Recombinant human UbchH6/UBE2E1 protein

Catalog Number: ATGP1690

terminus, was expressed in E. coli and purified by using conventional chromatography techniques.

Amino acid Sequence

<MGSSHHHHHH SSGLVPRGSH MGS>MSDDDSR ASTSSSSSS SNQTEKETN TPKKESKVS MSKNSKLLST
SAKRIQKELA DITLDPPPNC SAGPKGDNIY EWRSTILGPP GSVYEGGVFF LDITFTPEYP FKPPKVTFRY RIYHCNINSQ
GVICLDILKD NWSPALTISK VLLSICSLLT DCNPADPLVG SIATQYMTNR AEHDRMARQW TKRYAT

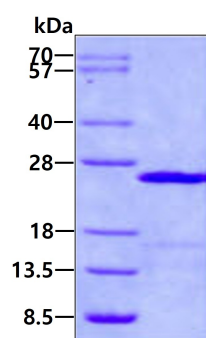
General References

Nuber u, et al. (1996). J Biol Chem. 271 (5): 2795-800.

Takeuchi T, et al. (2005). J. Biochem. 138 (6): 711-9.

DATA

SDS-PAGE



3ug by SDS-PAGE under reducing condition and visualized by coomassie blue stain.