

# Recombinant human SEC22B protein

Catalog Number: ATGP1709

## PRODUCT INFORMATION

---

### Expression system

E.coli

### Domain

14-194aa

### UniProt No.

O75396

### NCBI Accession No.

NP\_004883

### Alternative Names

Vesicle-trafficking protein SEC22b, ERS-24, SEC22L1

## PRODUCT SPECIFICATION

---

### Molecular Weight

23.3 kDa (205aa)

### Concentration

0.5mg/ml (determined by Bradford assay)

### Formulation

Liquid in. 20mM Tris-HCl buffer (pH 8.0) containing 2M urea, 10% glycerol, 0.15M NaCl

### Purity

> 90% by SDS-PAGE

### Tag

His-Tag

### Application

SDS-PAGE, Denatured

### Storage Condition

Can be stored at +2C to +8C for 1 week. For long term storage, aliquot and store at -20C to -80C. Avoid repeated freezing and thawing cycles.

## BACKGROUND

---

### Description

Vesicle-trafficking protein SEC22b precursor, also known as SEC22B, belongs to the synaptobrevin family. It seems to complex with SNARE and it is thought to play a role in the ER-Golgi protein trafficking. This protein has strong similarity to Mus musculus and Cricetulus griseus proteins. Recombinant human SEC22B protein, fused to His-tag at N-terminus, was expressed in E. coli.

### Amino acid Sequence

MGSSHHHHHH SGLVPRGSH MGSMLPLAAS MQEDEQSGRD LQQYQSQAKQ LFRKLNEQSP TRCTLEAGAM TFHYIIIEQGV

# Recombinant human SEC22B protein

Catalog Number: ATGP1709

CYLVLCEAAF PKKLAFAYLE DLHSEFDEQH GKKVPTVSRP YSFIEFDTFI QKTKKLYIDS RARRNLGSIN TELQDVQRIM  
VANIEEVLQR GEALSALDSK ANNLSLSK YRQDAKYLM RSTYA

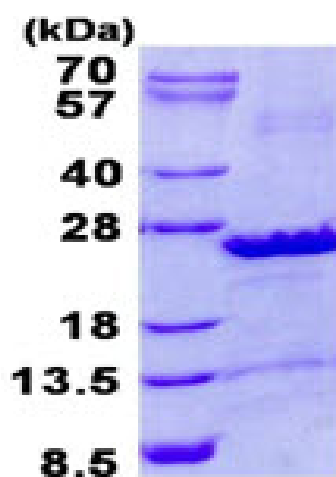
## General References

Nakajima K., et al. (2004) EMBO J. 23:3216-3226

Chi A., et al. (2006) J. Proteome Res. 5:3135-3144

## DATA

### SDS-PAGE



3ug by SDS-PAGE under reducing condition and visualized by coomassie blue stain.

15% SDS-PAGE (3ug)