

# Recombinant human CDK4 protein

Catalog Number: ATGP1724

## PRODUCT INFORMATION

---

### Expression system

E.coli

### Domain

1-303aa

### UniProt No.

P11802

### NCBI Accession No.

NP\_000066

### Alternative Names

Cyclin-dependent kinase 4, CMM3, PSK-J3

## PRODUCT SPECIFICATION

---

### Molecular Weight

36.1 kDa (326aa)

### Concentration

1mg/ml (determined by Bradford assay)

### Formulation

Liquid in. 20mM Tris-HCl buffer (pH 8.0) containing 10% glycerol

### Purity

> 85% by SDS-PAGE

### Tag

His-Tag

### Application

SDS-PAGE, Denatured

### Storage Condition

Can be stored at +2C to +8C for 1 week. For long term storage, aliquot and store at -20C to -80C. Avoid repeated freezing and thawing cycles.

## BACKGROUND

---

### Description

Cyclin-dependent kinase 4, also known as CDK4, belongs to the Cyclin-dependent kinases (CDK) family. CDK are the catalytic subunits of the cyclin/cdk complexes, which phosphorylate substrates on threonine/serine residues. CDK4, in complex with D-type cyclins, is thought to regulate cell growth during the G1 phase of the cell cycle. This association with a D-type cyclin upregulates CDK4 activity, whereas binding to the CDK inhibitor p16 downregulates CDK4 activity. Recombinant human CDK4 protein, fused to His-tag at N-terminus, was expressed in E. coli.

# Recombinant human CDK4 protein

Catalog Number: ATGP1724

## Amino acid Sequence

MGSSHHHHHH SGLVPRGSH MGSMATSRYE PVAEIGVGAY GTVYKARDPH SGHFVALKSV RVPNGGGGGG GLPISTVREV  
ALLRRLEAFE HPNVVRLMDV CATSRDREI KVTLVFEHVD QDLRTYLDKA PPPGLPAETI KDLMRQFLRG LDFLHANCIV  
HRDLKPENIL VTSGGTVKLA DFGLARIYSY QMALTPVVVT LWYRAPEVLL QSTYATPVDW WSVGCIFAEM FRRKPLFCGN  
SEADQLGKIF DLIGLPPEDD WPRDVSLPRG AFPPRGPRPV QSVVPEMEES GAQLLEMLT FNPHKRISAF RALQHSYLHK  
DEGNPE

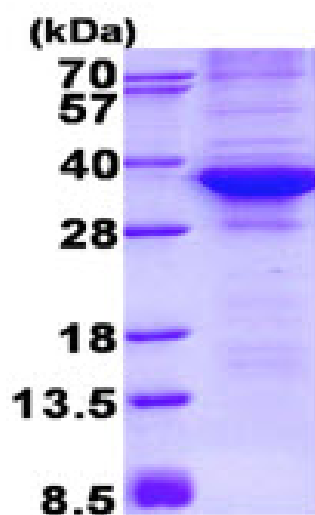
## General References

Serrano M., et al. (1993) Nature.366:704-707.

Kato J Y., et al. (1994) Mol Cell Biol. 14:2713-2721.

## DATA

### SDS-PAGE



3ug by SDS-PAGE under reducing condition and visualized by coomassie blue stain.

15% SDS-PAGE (3ug)