

Recombinant human RPL26L1 protein

Catalog Number: ATGP1746

PRODUCT INFORMATION

Expression system

E.coli

Domain

1-145aa

UniProt No.

Q9UNX3

NCBI Accession No.

NP_057177

Alternative Names

60S ribosomal protein L26-like 1, PL26P1

PRODUCT SPECIFICATION

Molecular Weight

19.6 kDa (168aa) confirmed by MALDI-TOF

Concentration

0.25mg/ml (determined by Bradford assay)

Formulation

Liquid in. 20mM Tris-HCl buffer (pH 8.0) containing 0.2M NaCl, 40% glycerol, 2mM DTT

Purity

> 90% by SDS-PAGE

Tag

His-Tag

Application

SDS-PAGE

Storage Condition

Can be stored at +2C to +8C for 1 week. For long term storage, aliquot and store at -20C to -80C. Avoid repeated freezing and thawing cycles.

BACKGROUND

Description

60S ribosomal protein L26-like 1, also known as RPL26L1, belongs to the ribosomal protein family and may play a role in protein synthesis. It is located in the cytoplasm. As is typical for genes encoding ribosomal proteins, there are multiple processed pseudogenes of this gene dispersed through the genome. Recombinant human RPL26L1 protein, fused to His-tag at N-terminus, was expressed in E. coli and purified by using conventional chromatography techniques.

Recombinant human RPL26L1 protein

Catalog Number: ATGP1746

Amino acid Sequence

MGSSHHHHHH SGLVPRGSH MGSMKFNPFV TSDRSKNRKR HFNAPSHVRR KIMSSPLSKE LRQKYNVRSM PIRKDDEVQV
VRGHYKGQOI GKVVQVYRKK YVIYIERVQR EKANGTTVHV GIHPSKVVIT RLKLDKDRKK ILERKAKSRQ VGKEKGKYKE
ELIEKMQE

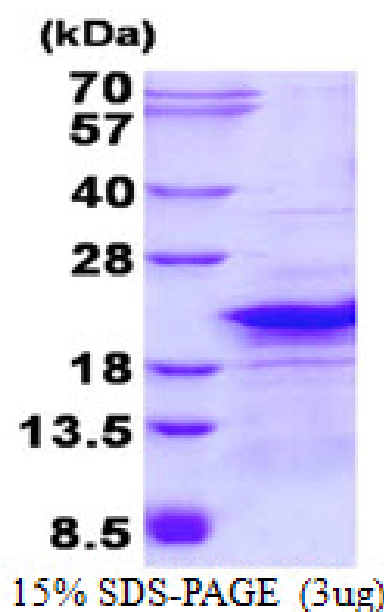
General References

Zaman G J., et al. (1993) Nucleic Acids Res. 21:1673

Wool I G., et al. (1998) Genome Res. 8: 509-523.

DATA

SDS-PAGE



3ug by SDS-PAGE under reducing condition and visualized by coomassie blue stain.