

# Recombinant human LIN-28B protein

Catalog Number: ATGP1754

## PRODUCT INFORMATION

---

### Expression system

E.coli

### Domain

1-250aa

### UniProt No.

Q6ZN17

### NCBI Accession No.

NP\_001004317

### Alternative Names

Protein lin-28 homolog B, CSDD2

## PRODUCT SPECIFICATION

---

### Molecular Weight

29.5 kDa (273aa) confirmed by MALDI-TOF (Molecular weight on SDS-PAGE will appear higher)

### Concentration

0.25mg/ml (determined by Bradford assay)

### Formulation

Liquid in. 20mM Tris-HCl buffer (pH 8.0) containing 0.2M NaCl, 10% glycerol, 2mM DTT

### Purity

> 85% by SDS-PAGE

### Tag

His-Tag

### Application

SDS-PAGE

### Storage Condition

Can be stored at +2C to +8C for 1 week. For long term storage, aliquot and store at -20C to -80C. Avoid repeated freezing and thawing cycles.

## BACKGROUND

---

### Description

Lin28B belongs to the lin-28 family. LIN28 protein is a microRNA-binding protein that binds to and enhances the translation of the IGF-2 (insulin-like growth factor 2) mRNA. Lin28B acts as a suppressor of microRNA (miRNA) biogenesis by specifically binding the precursor let-7 (pre-let-7), a miRNA precursor. Recombinant human Lin28B protein, fused to His-tag at N-terminus, was expressed in E. coli and purified by using conventional chromatography techniques.

# Recombinant human LIN-28B protein

Catalog Number: ATGP1754

## Amino acid Sequence

<MGSSHHHHHH SSGLVPRGSH MGS>MAEGGAS KGGGEEPGL PEPAEEESQV LRGTGHCKWF NVRMGFGFIS  
MINREGSPLD IPVDVFNHQS KLFMEGFRSL KEGEPVEFTF KKSSKGLSEI RVTGPGGSPC LGSERRPKGK TLQKRKPKGD  
RCYNCGGLDH HAKECSLPPQ PKKCHYCQSI MHMVANCPHK NVAQPPASSQ GRQEAESQPC TSTLPREVG GGHGCTSPFP  
QEARAEISER SGRSPQEASS TKSSIAPEEQ SKKGPSVQKR KKT

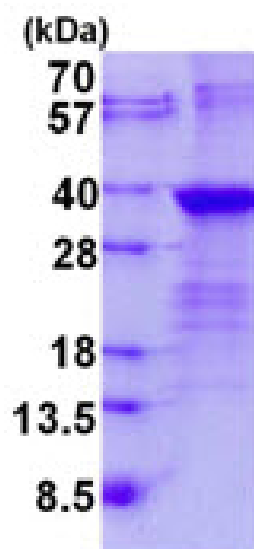
## General References

Heo I., et al. (2008) Mol. Cell 32:276-284

Richards M, et al. (2004) Stem Cells 22 (1): 51-64.

## DATA

### SDS-PAGE



3ug by SDS-PAGE under reducing condition and visualized by coomassie blue stain.

15% SDS-PAGE (3ug)