

Recombinant human XAGE1A protein

Catalog Number: ATGP1763

PRODUCT INFORMATION

Expression system

E.coli

Domain

1-81aa

UniProt No.

Q9HD64

NCBI Accession No.

NP_001091061.2

Alternative Names

G antigen family D member 2, CT12.1, CT12.1A, CTP9, GAGED2, XAGE1, XAGE1B, XAGE1C, XAGE1D, XAGE1E

PRODUCT SPECIFICATION

Molecular Weight

11.5 kDa (104aa) confirmed by MALDI-TOF

Concentration

0.25mg/ml (determined by Bradford assay)

Formulation

Liquid in. 20mM Tris-HCl buffer (pH 7.5) containing 2mM DTT, 30% glycerol, 0.1mM PMSF

Purity

> 85% by SDS-PAGE

Tag

His-Tag

Application

SDS-PAGE

Storage Condition

Can be stored at +2C to +8C for 1 week. For long term storage, aliquot and store at -20C to -80C. Avoid repeated freezing and thawing cycles.

BACKGROUND

Description

G antigen family D member 2, also known as XAGE1A, is a member of the XAGE subfamily, which belongs to the GAGE family. The GAGE genes are expressed in a variety of tumors and in some fetal and reproductive tissues. This gene is strongly expressed in Ewing's sarcoma, alveolar rhabdomyosarcoma and normal testis. The protein encoded by this gene contains a nuclear localization signal and shares a sequence similarity with other GAGE/PAGE proteins. Because of the expression pattern and the sequence similarity, this protein also belongs to a family of CT (cancer-testis) antigens. Recombinant human XAGE1A protein, fused to His-tag at N-terminus, was

Recombinant human XAGE1A protein

Catalog Number: ATGP1763

expressed in E. coli and purified by using conventional chromatography techniques.

Amino acid Sequence

<MGSSHHHHHH SSGLVPRGSH MGS>MESPKKK NQQLKVGILH LGSRQKKIRI QLRSCATWK VICKSCISQT
PGINLDLGSG VKVKIIPKEE HCKMPEAGEE QPQV

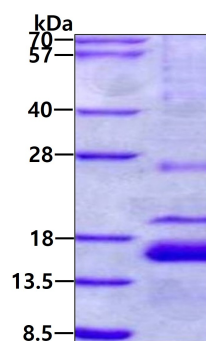
General References

Egland K.A., et al. (2002) Mol. Cancer Ther. 1:441-450

Sato S., et al. (2007) Cancer Immun. 7:5-5

DATA

SDS-PAGE



3ug by SDS-PAGE under reducing condition and visualized by coomassie blue stain.