

Recombinant human SPSB2 protein

Catalog Number: ATGP1780

PRODUCT INFORMATION

Expression system

E.coli

Domain

1-263aa

UniProt No.

Q99619

NCBI Accession No.

NP_001139788

Alternative Names

SPRY domain-containing SOCS box protein 2, GRCC9, SSB2

PRODUCT SPECIFICATION

Molecular Weight

31.2 kDa (287aa) confirmed by MALDI-TOF

Concentration

0.25mg/ml (determined by Bradford assay)

Formulation

Liquid in. 20mM Tris-HCl buffer (pH 8.0) containing 0.15M NaCl, 20% glycerol, 1mM DTT

Purity

> 85% by SDS-PAGE

Tag

His-Tag

Application

SDS-PAGE

Storage Condition

Can be stored at +2C to +8C for 1 week. For long term storage, aliquot and store at -20C to -80C. Avoid repeated freezing and thawing cycles.

BACKGROUND

Description

SPSB2 is a suppressor of cytokine signaling (SOCS) family member, and it belongs to the subfamily of proteins containing a central SPRY (repeats in splA and RyR) domain and a C-terminal SOCS box. This protein is present in a gene-rich cluster on chromosome 12p13 in the vicinity of the CD4 antigen and triosephosphate isomerase genes. Recombinant human SPSB2 protein, fused to His-tag at N-terminus, was expressed in E. coli and purified by using conventional chromatography techniques.

Recombinant human SPSB2 protein

Catalog Number: ATGP1780

Amino acid Sequence

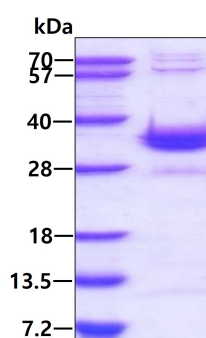
<MGSSHHHHHH SSGLVPRGSH MGSH>MGQTAL AGGSSSTPTP QALYPDLSCP EGLEELLSAP PPDLGAQRRH
GWNPKDCSEN IEVKEGGLYF ERRPVAQSTD GARGKRGYSR GLHAWAISWP LEQRGTHAVV GVATALAPLQ TDHYAALLGS
NSESWGWDIG RGKLYHQSKG PGAPQYPAGT QGEQLEVPER LLVVLDMEEG TLGYAIGGTY LGPAFRGLKG RTLYPAVSAV
WGQCQVRIRY LGERRAEPHS LLHLSRLCVR HNLGDTRLGQ VSALPLPPAM KRYLLYQ

General References

Wang,D., et al. (2005) Sect J. Biol. Chem. 280 (16), 16393-16401

DATA

SDS-PAGE



3ug by SDS-PAGE under reducing condition and visualized by coomassie blue stain.