

Recombinant human HGAL/GCSAM protein

Catalog Number: ATGP1807

PRODUCT INFORMATION

Expression system

E.coli

Domain

1-178aa

UniProt No.

Q8N6F7

NCBI Accession No.

NP_689998

Alternative Names

Germinal center-associated signaling and motility protein, Germinal center B-cell-expressed transcript 2 protein, GCSAM, GCAT2, HGAL, GCET2

PRODUCT SPECIFICATION

Molecular Weight

23 kDa (201aa) confirmed by MALDI-TOF

Concentration

0.5mg/ml (determined by Bradford assay)

Formulation

Liquid in. 20mM Tris-HCl buffer (pH 8.0) containing 0.2M NaCl, 50% glycerol, 1mM DTT

Purity

> 85% by SDS-PAGE

Tag

His-Tag

Application

SDS-PAGE

Storage Condition

Can be stored at +2C to +8C for 1 week. For long term storage, aliquot and store at -20C to -80C. Avoid repeated freezing and thawing cycles.

BACKGROUND

Description

GCET2 is a protein which may function in signal transduction pathways and whose expression is elevated in germinal cell lymphomas. It contains a putative PDZ-interacting domain, an immunoreceptor tyrosine-based activation motif (ITAM), and two putative SH2 binding sites. In B cells, its expression is specifically induced by interleukin-4. Recombinant human GCET2 protein, fused to His-tag at N-terminus, was expressed in E. coli and purified by using conventional chromatography techniques.

Recombinant human HGAL/GCSAM protein

Catalog Number: ATGP1807

Amino acid Sequence

MGSSHHHHHH SSGLVPRGSH MGSMGNSLLR ENRRQNTQE MPWNVRMQSP KQRTSRCWDH HIAEGCFCLP
WKKILIFEKR QDSQNERM SSTPIQDNVD QTYSEELCYT LINHRVLCTR PSGNSAEEYY ENVPCKAERP RESLGGTETE
YSLHMPSTD PRHARPEDE YELLMPHRIS SHFLQQRPL MAPSETQFSH L

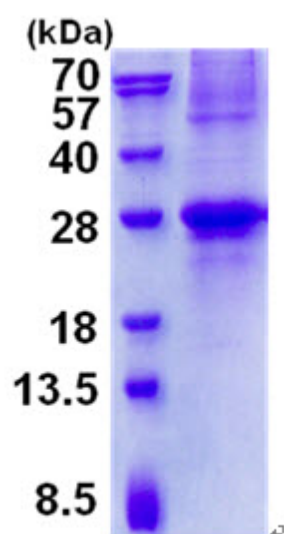
General References

Cubedo E, Maurin M, et al. (2011). FEBS J. 278(17):3065-75.

Temmins C, Zhao S, et al. (2011). Appl Immunohistochem Mol Morphol. 19(3):266-72.

DATA

SDS-PAGE



3ug by SDS-PAGE under reducing condition and visualized by coomassie blue stain.

15% SDS-PAGE (3ug)