

Recombinant human RASSF1A protein

Catalog Number: ATGP1815

PRODUCT INFORMATION

Expression system

E.coli

Domain

1-340aa

UniProt No.

Q9NS23

NCBI Accession No.

NP_009113

Alternative Names

Ras association domain-containing protein 1, 123F2, NORE2A, RASSF1, RDA32, REH3P21

PRODUCT SPECIFICATION

Molecular Weight

42.9 kDa (376aa)

Concentration

1mg/ml (determined by Bradford assay)

Formulation

Liquid in. 20mM Tris-HCl buffer (pH 8.0) containing 0.4M urea, 10% glycerol

Purity

> 85% by SDS-PAGE

Tag

His-Tag

Application

SDS-PAGE, Denatured

Storage Condition

Can be stored at +2C to +8C for 1 week. For long term storage, aliquot and store at -20C to -80C. Avoid repeated freezing and thawing cycles.

BACKGROUND

Description

RASSF1A is similar to the RAS effector proteins. Loss or altered expression of this gene has been associated with the pathogenesis of a variety of cancers, which suggests the tumor suppressor function of this gene. The inactivation of this gene was found to be correlated with the hypermethylation of its CpG-island promoter region. This protein required for death receptor-dependent apoptosis. Recombinant human RASSF1A protein, fused to His-tag at N-terminus, was expressed in E. coli.

Recombinant human RASSF1A protein

Catalog Number: ATGP1815

Amino acid Sequence

MRGSHHHHHH GMASMTGGGQQ MGRDLYDDDD KDRWGSMSSGE PELIELRELA PAGRAGKGRT RLERANALRI
ARGTACNPTR QLVPGRGHRF QPAGPATHTW CDLCGDFIWG VVRKGLQCAH CKFTCHYRCR ALVCLDCCGP
RDLGWEPAVE RDTNVDEPVE WETPDLSQAE IEQKIKEYNA QINSNLFMSL NKDGSYTGFI KVQLKLRPV SVPSSKKPPS
LQDARRGPGR GTSVRRRTSF YLPKDAVKHL HVLSRTRARE VIEALLRKFL VVDDPRKFAL FERAERHGQV YLRKLLDDEQ
PLRLLLAGP SDKALSFVLK ENDSGEVNWD AFSMPELHNF LRILQREEEE HLRQILQKYS YCRQKIQEAL HACPLG

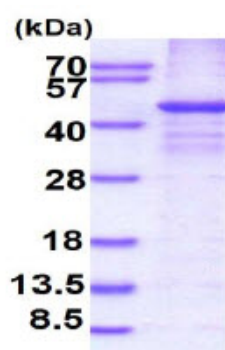
General References

Burbee D.G., et al. (2001) J. Natl. Cancer Inst. 93:691-699

Shivakumar L., et al. (2002) Mol. Cell. Biol. 22:4309-4318

DATA

SDS-PAGE



15% SDS-PAGE (3ug)

3ug by SDS-PAGE under reducing condition and visualized by coomassie blue stain.