

Recombinant human SSR4 protein

Catalog Number: ATGP1821

PRODUCT INFORMATION

Expression system

E.coli

Domain

24-144aa

UniProt No.

P51571

NCBI Accession No.

NP_006271

Alternative Names

Translocon-associated protein subunit delta, TRAPD

PRODUCT SPECIFICATION

Molecular Weight

16.1 kDa (144aa)

Concentration

1mg/ml (determined by Bradford assay)

Formulation

Liquid in. 20mM Tris-HCl buffer (pH 8.0) containing 0.4M urea, 10% glycerol

Purity

> 90% by SDS-PAGE

Tag

His-Tag

Application

SDS-PAGE, Denatured

Storage Condition

Can be stored at +2C to +8C for 1 week. For long term storage, aliquot and store at -20C to -80C. Avoid repeated freezing and thawing cycles.

BACKGROUND

Description

SSR4 is the delta subunit of the translocon-associated protein complex which is involved in translocating proteins across the endoplasmic reticulum membrane. The protein is located in the Xq28 region and is arranged in a compact head-to-head manner with the isocitrate dehydrogenase 3 (NAD+) gamma gene and both genes are driven by a CpG-embedded bidirectional promoter. Alternate splicing results in multiple transcript variants. Recombinant human SSR4 protein, fused to His-tag at N-terminus, was expressed in E. coli.

Recombinant human SSR4 protein

Catalog Number: ATGP1821

Amino acid Sequence

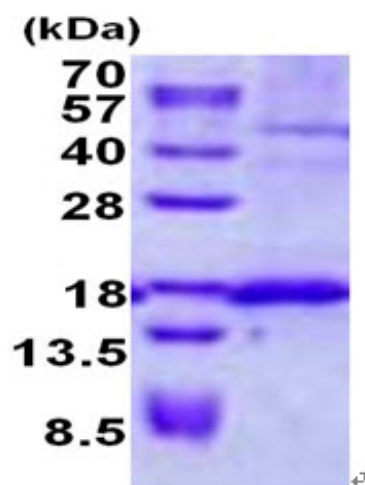
MGSSHHHHHH SGLVPRGSH MGSEACLEPQ ITPSYTTSD AVISTETVFI VEISLTCKNR VQNMALYADV GGKQFPVTRG
QDVGRYQVSW SLDHKSAHAG TYEVRFFDEE SYLLRKAQR NNEDISIIPP LFTVSVDHRG TWNG

General References

Wang,Z., et al. (2004) Melanoma Res. 14 (2), 107-114

DATA

SDS-PAGE



3ug by SDS-PAGE under reducing condition and visualized by coomassie blue stain.

15% SDS-PAGE (3ug)