

# Recombinant human LIN-7C protein

Catalog Number: ATGP1837

## PRODUCT INFORMATION

---

### Expression system

E.coli

### Domain

1-197aa

### UniProt No.

Q9NUP9

### NCBI Accession No.

NP\_060832

### Alternative Names

Lin-7 homolog C (*C. elegans*), LIN-7-C, LIN-7C, MALS-3, MALS3, VELI3, Mammalian lin-seven protein 3, Vertebrate lin-7 homolog 3

## PRODUCT SPECIFICATION

---

### Molecular Weight

24.2 kDa (220aa) confirmed by MALDI-TOF

### Concentration

0.5mg/ml (determined by Bradford assay)

### Formulation

Liquid in. 20mM Tris-HCl buffer (pH 8.0) containing 0.2M NaCl, 30% glycerol

### Purity

> 90% by SDS-PAGE

### Tag

His-Tag

### Application

SDS-PAGE

### Storage Condition

Can be stored at +2C to +8C for 1 week. For long term storage, aliquot and store at -20C to -80C. Avoid repeated freezing and thawing cycles.

## BACKGROUND

---

### Description

LIN7C plays a role in establishing and maintaining the asymmetric distribution of channels and receptors at the plasma membrane of polarized cells. It forms membrane-associated multiprotein complexes that may regulate delivery and recycling of proteins to the correct membrane domains. Recombinant human LIN7C protein, fused to His-tag at N-terminus, was expressed in *E. coli* and purified by using conventional chromatography techniques.

## Recombinant human LIN-7C protein

Catalog Number: ATGP1837

### Amino acid Sequence

MGCSHHHHHH SSGLVPRGSH MGSMAALGEP VRLERDICRA IELLEKLQRS GEVPPQKLQA LQRVLQSEFC NAVREVEYEHV  
YETVDISSSP EVRANATAKA TAAFAASEG HSHPRVVELP KTEEGLGFNI MGGKEQNSPI YISRIIPGGI ADRHGGLKRG  
DQLLSVNGVS VEGEHHEKAV ELLKAAQGV KLVVRYTPKV LEEMESRFEK MRS AKRRQQT

### General References

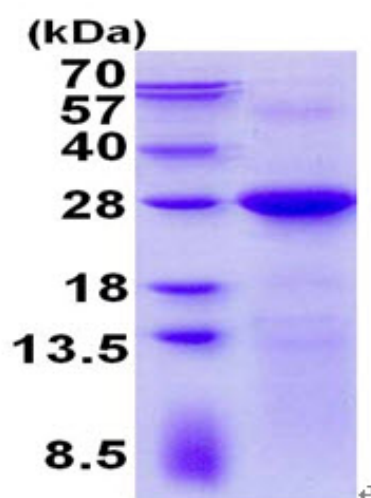
Ng, M.C., et al. (2010) J. Clin. Endocrinol. Metab. 95 (5), 2418-2425

Lanktree, M., et al. (2008) Am. J. Med. Genet. B Neuropsychiatr. Genet. 147B (6), 945-951

## DATA

---

### SDS-PAGE



3ug by SDS-PAGE under reducing condition and visualized by coomassie blue stain.

15% SDS-PAGE (3ug)