

Recombinant human AMELX protein

Catalog Number: ATGP1859

PRODUCT INFORMATION

Expression system

E.coli

Domain

17-191aa

UniProt No.

Q99217

NCBI Accession No.

NP_001133

PRODUCT SPECIFICATION

Molecular Weight

22.3 kDa (198aa) confirmed by MALDI-TOF

Concentration

0.25mg/ml (determined by Bradford assay)

Formulation

Liquid in. 20mM Tris-HCl buffer (pH 8.5) containing 0.2M NaCl, 30% glycerol, 1mM DTT

Purity

> 90% by SDS-PAGE

Tag

His-Tag

Application

SDS-PAGE

Storage Condition

Can be stored at +2C to +8C for 1 week. For long term storage, aliquot and store at -20C to -80C. Avoid repeated freezing and thawing cycles.

BACKGROUND

Description

AMELX is a member of the amelogenin family of extracellular matrix proteins. Amelogenins are involved in biomineralization during tooth enamel development. Mutations in AMELX cause X-linked amelogenesis imperfecta. Alternative splicing results in multiple transcript variants encoding different isoforms. Recombinant human AMELX protein, fused to His-tag at N-terminus, was expressed in E. coli and purified by using conventional chromatography techniques.

Amino acid Sequence

<MGSSHHHHHH SGLVPRGSH MGS>MPLPPHP GHPGYINFSY EVLTPKWYQ SIRPPYPSYG YEPMGGWLHH
QIIPVLSQQH PPTHTLQPHH HIPVVPAQQP VIPQQPMMPV PGQHSMTPIQ HHQPNLPPA QQPYPQPVQ PQPHQPMQPQ

Recombinant human AMELX protein

Catalog Number: ATGP1859

PPVHPMQPLP PQPPLPPMFP MQPLPPMLPD LTLEAWPSTD KTKREEVD

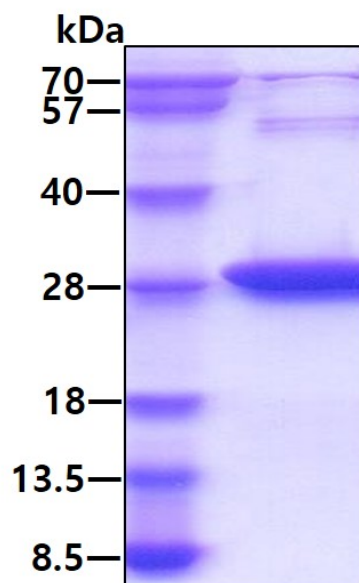
General References

Patir A, Seymen F, et al. (2008). Caries Res. 42(5):394-400.

Zhu L, Tanimoto K, et al. (2009). Cells Tissues Organs. 189(1-4):203-6.

DATA

SDS-PAGE



3ug by SDS-PAGE under reducing condition and visualized by coomassie blue stain.