

Recombinant human LSM12 protein

Catalog Number: ATGP1865

PRODUCT INFORMATION

Expression system

E.coli

Domain

1-195aa

UniProt No.

Q3MHD2

NCBI Accession No.

NP_689557

Alternative Names

Protein LSM12 homolog, Protein LSM12 homolog, PNAS-135

PRODUCT SPECIFICATION

Molecular Weight

24.1 kDa (218aa) confirmed by MALDI-TOF

Concentration

1mg/ml (determined by Bradford assay)

Formulation

Liquid in. 20mM Tris-HCl buffer (pH 7.5) containing 0.1M NaCl, 10% glycerol, 1mM DTT

Purity

> 90% by SDS-PAGE

Tag

His-Tag

Application

SDS-PAGE

Storage Condition

Can be stored at +2C to +8C for 1 week. For long term storage, aliquot and store at -20C to -80C. Avoid repeated freezing and thawing cycles.

BACKGROUND

Description

LSM12 belongs to the snRNP Sm proteins family. Sm-like proteins were identified in a variety of organisms based on sequence homology with the Sm protein family. Sm-like proteins contain the Sm sequence motif, which consists of 2 regions separated by a linker of variable length that folds as a loop. The Sm-like proteins are thought to form a stable heteromer present in tri-snRNP particles, which are important for pre-mRNA splicing. Recombinant human LSM12 protein, fused to His-tag at N-terminus, was expressed in E. coli and purified by using conventional chromatography techniques.

Recombinant human LSM12 protein

Catalog Number: ATGP1865

Amino acid Sequence

<MGSSHHHHHH SSGLVPRGSH MGS>MAAPPGE YFSVGSQVSC RTCQEQLQG EVVAFDYQSK MLALKCPSSS
GKPNHADILL INLQYVSEVE IINDRTETPP PLASLNVSKL ASKARTEKEE KLSQAYAISA GVSLEGQQLF QTIHKTIKDC
KWQEKNIIVM EEVVITPPYQ VENCKGKEGS ALSHVRKIVE KHFRDVESQK ILQRSQAQQP QKEAALSS

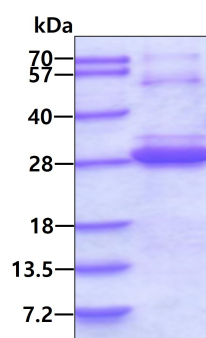
General References

Lehner, Ben, et al. (2004) Genome Res. (united States) 14 (7): 1315-23.

Achsel T., et al. (1999) EMBO J. 18:5789-5802

DATA

SDS-PAGE



3ug by SDS-PAGE under reducing condition and visualized by coomassie blue stain.