

Recombinant human RSG1 protein

Catalog Number: ATGP1871

PRODUCT INFORMATION

Expression system

E.coli

Domain

1-258aa

UniProt No.

Q9BU20

NCBI Accession No.

NP_112169

Alternative Names

REM2 and RAB-like small GTPase 1, REM2 and RAB-like small GTPase 1, C1orf89, RP4-733M16.4

PRODUCT SPECIFICATION

Molecular Weight

30.9 kDa (281aa) confirmed by MALDI-TOF

Concentration

0.25mg/ml (determined by Bradford assay)

Formulation

Liquid in. 20mM Tris-HCl buffer (pH 8.5) containing 0.2M NaCl, 50% glycerol, 2mM DTT

Purity

> 85% by SDS-PAGE

Tag

His-Tag

Application

SDS-PAGE

Storage Condition

Can be stored at +2C to +8C for 1 week. For long term storage, aliquot and store at -20C to -80C. Avoid repeated freezing and thawing cycles.

BACKGROUND

Description

RSG1 plays a role in targeted membrane trafficking most probably at the level of vesicle fusion with membranes. This protein is involved in cilium biogenesis by regulating the transport of cargo proteins to the basal body and to the apical tips of cilia. Recombinant human RSG1 protein, fused to His-tag at N-terminus, was expressed in E. coli and purified by using conventional chromatography techniques.

Amino acid Sequence

MGSSHHHHHH SGLVPRGSH MGSMARPPVP GSVVVPNWHE SAEGKEYLAC ILRKNRRRVF GLLERPVLPPV PVSIDTASYK

Recombinant human RSG1 protein

Catalog Number: ATGP1871

IFVSGKSGVG KTALVAKLAG LEVPVVHET TGIQTTVFW PAKLQASSRV VMFRFEFWDG GESALKKFDH MLLACMENTD
AFLFLFSFTD RASFEDLPGQ LARIAGEAPG VVRMVGSKF DQYMHTDVPE RDLTAFRQAW ELPLLRVKS SV PGRRLADGRT
LDGRAGLADV AHILNGLAEQ LWHQDQVAAG LLPNPESAP E

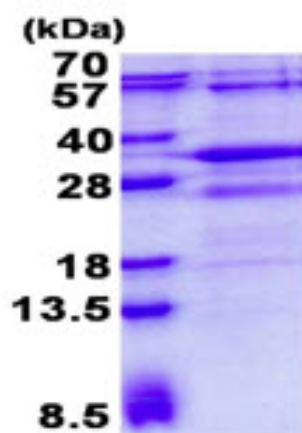
General References

Gregory S.G., et al. (2006) Nature. 441:315-321

The MGC Project Team. (2004) Genome Res. 14:2121-2127

DATA

SDS-PAGE



3ug by SDS-PAGE under reducing condition and visualized by coomassie blue stain.

15% SDS-PAGE (3ug)