

Recombinant human KLRG1 protein

Catalog Number: ATGP1886

PRODUCT INFORMATION

Expression system

E.coli

Domain

60-189aa

UniProt No.

Q96E93

NCBI Accession No.

NP_005801.3

Alternative Names

Killer cell lectin-like receptor subfamily G member 1, 2F1, CLEC15A, MAFA, MAFA-2F1, MAFA-L, MAFA-LIKE

PRODUCT SPECIFICATION

Molecular Weight

17 kDa (153aa)

Concentration

0.5mg/ml (determined by Bradford assay)

Formulation

Liquid in. 20mM Tris-HCl buffer (pH 8.0) containing 0.4M urea, 10% glycerol

Purity

> 85% by SDS-PAGE

Tag

His-Tag

Application

SDS-PAGE, Denatured

Storage Condition

Can be stored at +2C to +8C for 1 week. For long term storage, aliquot and store at -20C to -80C. Avoid repeated freezing and thawing cycles.

BACKGROUND

Description

KLRG1 belongs to the killer cell lectin-like receptor (KLR) family, which is a group of transmembrane proteins preferentially expressed in NK cells. Natural killer (NK) cells are lymphocytes that can mediate lysis of certain tumor cells and virus-infected cells without previous activation. They can also regulate specific humoral and cell-mediated immunity. Cell surface expression of KLRG1 is up-regulated by expression of MHC class I molecules. Recombinant human KLRG1 protein, fused to His-tag at N-terminus, was expressed in E. coli.

Recombinant human KLRG1 protein

Catalog Number: ATGP1886

Amino acid Sequence

<MGSSHHHHHH SSGLVPRGSH MGS>LCQGSNY STCASCPCP DRWMKYGNHC YYFSVEEKDW NSSLEFCLAR
DSHLLVITDN QEMSLQVFL SEAFCWIGLR NNSGWRWEDG SPLNFSRISS NSFVQTCGAI NKNGLQASSC EVPLHWVCKK
VRL

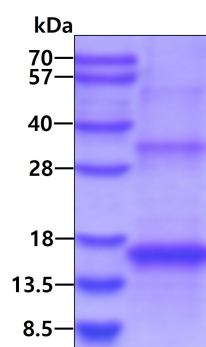
General References

Schwartzkopff S, Grundemann C, et al. (2007). J Immunol. 179(2):1022-9.

Ibegbu CC, Xu YX, et al. (2005). J Immunol. 174(10):6088-94.

DATA

SDS-PAGE



3ug by SDS-PAGE under reducing condition and visualized by coomassie blue stain.