

Recombinant human KCTD15 protein

Catalog Number: ATGP1893

PRODUCT INFORMATION

Expression system

E.coli

Domain

1-234aa

UniProt No.

Q96SI1

NCBI Accession No.

NP_076981

Alternative Names

BTB/POZ domain-containing protein KCTD15, MGC25497, MGC2628

PRODUCT SPECIFICATION

Molecular Weight

28.6 kDa (254aa)

Concentration

1mg/ml (determined by Bradford assay)

Formulation

Liquid in. 20mM Tris-HCl buffer (pH 8.0) containing 0.4M urea, 10% glycerol

Purity

> 90% by SDS-PAGE

Tag

His-Tag

Application

SDS-PAGE, Denatured

Storage Condition

Can be stored at +2C to +8C for 1 week. For long term storage, aliquot and store at -20C to -80C. Avoid repeated freezing and thawing cycles.

BACKGROUND

Description

Potassium channel tetramerisation domain containing 15, also known as KCTD15, may be associated with obesity. KCTD15 was identified as a genetic loci associated with higher than normal body mass index (BMI) in humans along with genes such as GNPDA2, MTCH2, FTO, and TMEM18. Recombinant human KCTD15 protein, fused to His-tag at N-terminus, was expressed in E. coli.

Amino acid Sequence

MGSSHHHHHH SGLVPRGSH MPHRKERPSG SSLHTHGSTG TAEGGNMSRL SLTRSPVSPL AAQGIPLPAQ LTKSNAPVHI

Recombinant human KCTD15 protein

Catalog Number: ATGP1893

DVGSHMYTSS LATLTKYPDS RISRLFNGTE PIVLDSLKQH YFIDRDGEIF RYVLSFLRTS KLLLPDDFKD FSLLYEEARY
YQLQPMVREL ERWQQEQEQR RRSRACDCLV VRVTPDLGER IALSGEKALI EEVFPETGDV MCNSVNAGWN QDPHVIRFP
LNGYCR LNSV QDVL

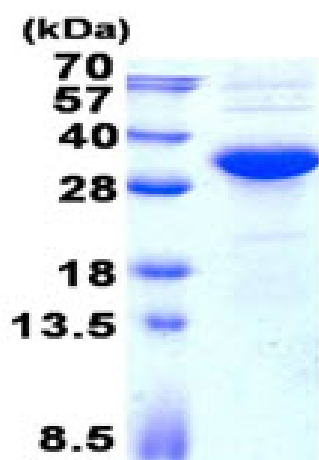
General References

Dephoure N., et al. (2008) Proc. Natl. Acad. Sci. u.S.A. 105:10762-10767

Burkard T.R., et al. (2011) BMC Syst. Biol. 5:17-17

DATA

SDS-PAGE



3ug by SDS-PAGE under reducing condition and visualized by coomassie blue stain.

15% SDS-PAGE (3ug)