

# Recombinant human SDHAF2 protein

Catalog Number: ATGP1901

## PRODUCT INFORMATION

---

### Expression system

E.coli

### Domain

30-166aa

### UniProt No.

Q9NX18

### NCBI Accession No.

NP\_060311

### Alternative Names

Succinate dehydrogenase assembly factor 2 mitochondrial, Succinate dehydrogenase assembly factor 2, mitochondrial, C11orf79, PGL2, SDH5

## PRODUCT SPECIFICATION

---

### Molecular Weight

19kDa (160aa) confirmed by MALDI-TOF

### Concentration

0.5mg/ml (determined by Bradford assay)

### Formulation

Liquid in. 20mM Tris-HCl buffer (pH 8.0) containing 0.2M NaCl, 30% glycerol, 1mM DTT

### Purity

> 90% by SDS-PAGE

### Tag

His-Tag

### Application

SDS-PAGE

### Storage Condition

Can be stored at +2C to +8C for 1 week. For long term storage, aliquot and store at -20C to -80C. Avoid repeated freezing and thawing cycles.

## BACKGROUND

---

### Description

SDHAF2 is a mitochondrial protein needed for the flavination of a succinate dehydrogenase complex subunit required for activity of the complex. Defects in SDHAF2 are the cause of hereditary paragangliomas type 2 (PGL2), also known as familial non-chromaffin paragangliomas type 2. Paragangliomas refer to rare and mostly benign tumors that arise from any component of the neuroendocrine system. Recombinant human SDHAF2 protein, fused to His-tag at N-terminus, was expressed in E. coli and purified by using conventional

# Recombinant human SDHAF2 protein

Catalog Number: ATGP1901

chromatography techniques.

## Amino acid Sequence

MGSSHHHHHH SGLVPRGSH MGSSFRRFYR GDSPTDSQKD MIEIPLPPWQ ERTDESIETK RARLLYESRK RGMLENCILL  
SLFAKEHLQH MTEKQLNLYD RLINEPSNDW DIYYWATEAK PAPEIFENEV MALLRDFAKN KNKEQRLRAP DLEYLFKPR

## General References

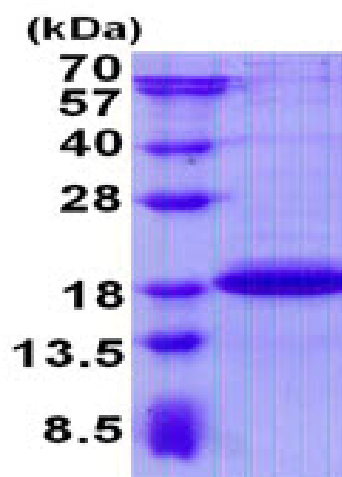
Kunst,H.P., et al. (2011) Clin. Cancer Res. 17 (2), 247-254

Starker,L.F., et al. (2010) Endocrine 38 (3), 397-401

## DATA

---

### SDS-PAGE



3ug by SDS-PAGE under reducing condition and visualized by coomassie blue stain.

15% SDS-PAGE (3ug)