

Recombinant human AICL/CLEC2B protein

Catalog Number: ATGP1902

PRODUCT INFORMATION

Expression system

E.coli

Domain

26-149aa

UniProt No.

Q92478

NCBI Accession No.

NP_005118

Alternative Names

C-type lectin domain family 2 member B, Activation-induced C-type lectin, C-type lectin superfamily member 2, IFN-alpha-2b-inducing-related protein 1, AICL, CLECSF2, IFNRG1, HP10085

PRODUCT SPECIFICATION

Molecular Weight

16.9 kDa (147aa)

Concentration

1mg/ml (determined by Bradford assay)

Formulation

Liquid in. 20mM Tris-HCl buffer (pH 8.0) containing 2M uREA, 10% glycerol

Purity

> 85% by SDS-PAGE

Tag

His-Tag

Application

SDS-PAGE, Denatured

Storage Condition

Can be stored at +2C to +8C for 1 week. For long term storage, aliquot and store at -20C to -80C. Avoid repeated freezing and thawing cycles.

BACKGROUND

Description

CLEC2B is a member of the C-type lectin/C-type lectin-like domain (CTL/CTLD) superfamily. Members of this family share a common protein fold and have diverse functions, such as cell adhesion, cell-cell signalling, glycoprotein turnover, and roles in inflammation and immune response. The type 2 transmembrane protein may function as a cell activation antigen. An alternative splice variant has been described but its full-length sequence has not been determined. This gene is closely linked to other CTL/CTLD superfamily members on chromosome

Recombinant human AICL/CLEC2B protein

Catalog Number: ATGP1902

12p13 in the natural killer gene complex region. Recombinant human CLEC2B protein, fused to His-tag at N-terminus, was expressed in E. coli.

Amino acid Sequence

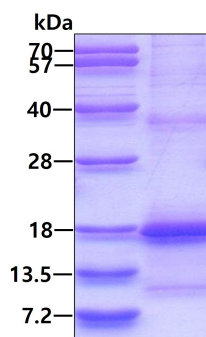
<MGSSHHHHHH SSGLVPRGSH MGS>KLTRDSQ SLCPYDWIGF QNKCYFSKE EGDWNSSKYN CSTQHADLTI
IDNIEEMNFL RRYKCSSDHW IGLKMAKNRT GQWVDGATFT KSGMARGSEG CAYLSDDGAA TARCYTERKW ICRKRIH

General References

Akatsuka,A., et al. (2010) Int. Immunol. 22 (9), 783-790

DATA

SDS-PAGE



3ug by SDS-PAGE under reducing condition and visualized by coomassie blue stain.