

# Recombinant human SAR1B protein

Catalog Number: ATGP1910

## PRODUCT INFORMATION

---

### Expression system

E.coli

### Domain

1-198aa

### UniProt No.

Q9Y6B6

### NCBI Accession No.

NP\_057187

### Alternative Names

GTP-binding protein SAR1b, ANDD, CMRD, GTBPB, SARA2

## PRODUCT SPECIFICATION

---

### Molecular Weight

24.8 kDa (221aa) confirmed by MALDI-TOF

### Concentration

0.5mg/ml (determined by Bradford assay)

### Formulation

Liquid in. 20mM Tris-HCl buffer (pH 8.0) containing 0.15M NaCl, 10% glycerol

### Purity

> 95% by SDS-PAGE

### Tag

His-Tag

### Application

SDS-PAGE

### Storage Condition

Can be stored at +2C to +8C for 1 week. For long term storage, aliquot and store at -20C to -80C. Avoid repeated freezing and thawing cycles.

## BACKGROUND

---

### Description

SAR1b, also known as CMRD, is involved in transport from the endoplasmic reticulum to the Golgi apparatus. This protein is activated by the guanine nucleotide exchange factor PREB. It is involved in the selection of the protein cargo and the assembly of the COPII coat complex. Recombinant human SAR1B protein, fused to His-tag at N-terminus, was expressed in E. coli and purified by using conventional chromatography techniques.

### Amino acid Sequence

MGSSHHHHHH SGLVPRGSH MGSMSFIFDW IYSGFSSVLQ FLGLYKKTGK LVFLGLDNAG KTTLLHMLKD DRLGQHVPTL

# Recombinant human SAR1B protein

Catalog Number: ATGP1910

HPTSEELTIA GMTFTTFDLG GHVQARRVWK NYLPAINGIV FLVDCADHER LLESKEELDS LMTDETIANV PILILGNKID  
RPEAISEERL REMFGLYGQT TGKGSISLKE LNARPLEVFM CSVLKRQGYG EGFRWMAQYI D

## General References

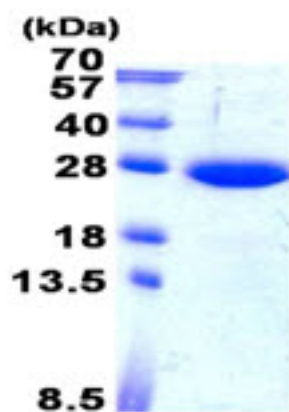
Annesi G., et al. (2007) Clin. Genet. 71:288-289

Treepongkaruna S., et al. (2009) J. Pediatr. Gastroenterol. Nutr. 48:370-373

## DATA

---

### SDS-PAGE



3ug by SDS-PAGE under reducing condition and visualized by coomassie blue stain.

15% SDS-PAGE (3ug)