

Recombinant human Bub3 protein

Catalog Number: ATGP1929

PRODUCT INFORMATION

Expression system

E.coli

Domain

1-328aa

UniProt No.

O43684

NCBI Accession No.

NP_004716

Alternative Names

Mitotic checkpoint protein BuB3, BuB3L, hBuB3

PRODUCT SPECIFICATION

Molecular Weight

39.5 kDa (351aa)

Concentration

1mg/ml (determined by Bradford assay)

Formulation

Liquid in. 20mM Tris-HCl buffer (pH 8.0) containing 0.4M urea, 10% glycerol

Purity

> 85% by SDS-PAGE

Tag

His-Tag

Application

SDS-PAGE, Denatured

Storage Condition

Can be stored at +2C to +8C for 1 week. For long term storage, aliquot and store at -20C to -80C. Avoid repeated freezing and thawing cycles.

BACKGROUND

Description

Mitotic checkpoint protein BuB3, also known as Bub3, is a conserved component of the mitotic spindle assembly complex (MCC). The encoded protein contains four WD repeat domains and has sequence similarity with the yeast Bub3 protein. Bub3 is essential for the kinetochore localization of Bub1 and BubR1. Bub3 is involved in the essential spindle checkpoint pathway that operates during early embryogenesis. In addition, Bub3 plays a role in regulating the establishment of correct kinetochore-microtubule attachments. Recombinant human Bub3 protein, fused to His-tag at N-terminus, was expressed in E. coli.

Recombinant human Bub3 protein

Catalog Number: ATGP1929

Amino acid Sequence

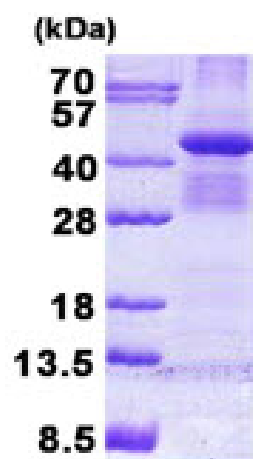
MGSSHHHHHH SSSLVPRGSH MGSMTGSNEF KLNQPPEDGI SSVKFSPTS QLLVSSWDT SVRLYDVPAN SMRLKYQHTG
AVLDCAFYDP THAWSGGLDH QMKMHDLNTD QENLVGTHDA PIRCVEYCPE VNVMTGSDW QTVKLWDPRT
PCNAGTFSQP EKVYTLVSVG DRLIVGTAGR RVLVWDLRNM GYVQQRRESS LKYQTRCIRA FPNKQGYVLS SIEGRVAVEY
LDPSPEVQKK KYAFKCHRLK ENNIEQIYPV NAISFHNIHN TFATGGSDGF VNIWDPFNKK RLCQFHRYPT SIASLAFSND
GTTLAIASSY MYEMDDTEHP EDGIFIRQVT DAETKPKSPC T

General References

Martinez Exposito M J., et al. (1999) Proc Natl Acad Sci uSA. 96:8493-8498.
Warren C D., et al. (2002) Mol Biol Cell. 13:3029-3041.

DATA

SDS-PAGE



3ug by SDS-PAGE under reducing condition and visualized by coomassie blue stain.

15% SDS-PAGE (3ug)