

Recombinant human OCIL/CLEC2D protein

Catalog Number: ATGP1938

PRODUCT INFORMATION

Expression system

E.coli

Domain

60-191aa

UniProt No.

Q9UHP7

NCBI Accession No.

NP_037401

Alternative Names

C-type lectin domain family 2 member D, CLAX1, LLT11, OCIL, Macroprohage lectin 2

PRODUCT SPECIFICATION

Molecular Weight

17.7 kDa (155aa)

Concentration

1mg/ml (determined by Bradford assay)

Formulation

Liquid in. 20mM Tris-HCl buffer (pH 8.0) containing 0.4M urea, 10% glycerol

Purity

> 85% by SDS-PAGE

Tag

His-Tag

Application

SDS-PAGE, Denatured

Storage Condition

Can be stored at +2C to +8C for 1 week. For long term storage, aliquot and store at -20C to -80C. Avoid repeated freezing and thawing cycles.

BACKGROUND

Description

C-type lectin domain family 2, also known as CLEC2D, is a receptor for KLRB1 that protects target cells against natural killer cell-mediated lysis. It inhibits osteoclast formation and contains a transmembrane domain near the N-terminus as well as the C-type lectin-like extracellular domain. Recombinant human CLEC2D protein, fused to His-tag at N-terminus, was expressed in E. coli.

Amino acid Sequence

MGSSHHHHHH SGLVPRGSH MGRANCHQE PSVCLQAACP ESWIGFQRKC FYFSDDTKNW TSSQRFCD SQ

Recombinant human OCIL/CLEC2D protein

Catalog Number: ATGP1938

DADLAQVESF QELNFLRLRYK GPSDHWIGLS REQQPWKWI NGTEWTRQFP ILGAGECAYL NDKGASSARH YTERKWICKS
SDIHV

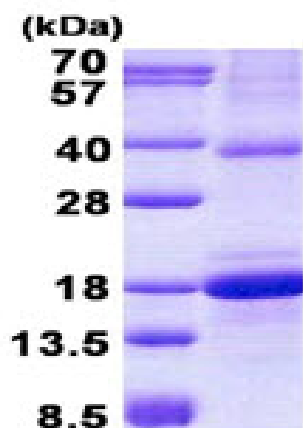
General References

Hu Y.S M., et al. (2004) J. Bone Miner. Res. 19:89-99

Germain C., et al. (2010) J. Biol. Chem. 285:36207-36215

DATA

SDS-PAGE



3ug by SDS-PAGE under reducing condition and visualized by coomassie blue stain.

15% SDS-PAGE (3ug)