

Recombinant human Carboxypeptidase E/CPE protein

Catalog Number: ATGP1953

PRODUCT INFORMATION

Expression system

E.coli

Domain

43-476aa

UniProt No.

P16870

NCBI Accession No.

NP_001864

Alternative Names

Carboxypeptidase E, Carboxypeptidase H, CPH

PRODUCT SPECIFICATION

Molecular Weight

51.4 kDa (457aa)

Concentration

0.5mg/ml (determined by Bradford assay)

Formulation

Liquid in. 20mM Tris-HCl buffer (pH 8.0) containing 0.15M NaCl, 10% glycerol, 1mM DTT

Purity

> 85% by SDS-PAGE

Tag

His-Tag

Application

SDS-PAGE

Storage Condition

Can be stored at +2C to +8C for 1 week. For long term storage, aliquot and store at -20C to -80C. Avoid repeated freezing and thawing cycles.

BACKGROUND

Description

CPE is a carboxypeptidase that cleaves C-terminal amino acid residues and is involved in the biosynthesis of peptide hormones and neurotransmitters, including insulin. It is a peripheral membrane protein. The protein specifically binds regulated secretory pathway proteins, including prohormones, but constitutively secreted proteins. Mutations in CPE are implicated in type II diabetes. Recombinant human CPE protein, fused to His-tag at N-terminus, was expressed in E. coli.

Recombinant human Carboxypeptidase E/CPE protein

Catalog Number: ATGP1953

Amino acid Sequence

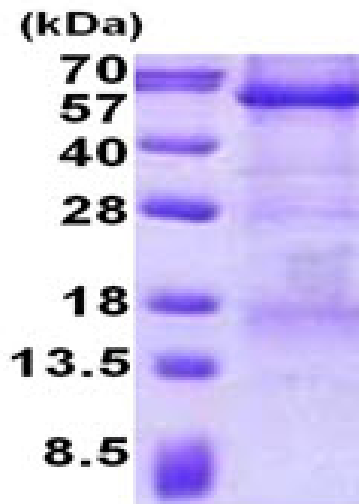
MGSSHHHHHH SSGLVPRGSH MGS LQQEDGI SF EYHRYPEL REALVSVWLQ CTAISRIYTV GRSFEGRELL VIELSDNPGV
HEPGEPEFKY IGNMHGNEAV GRELLIFLAQ YLCNEYQKGN ETIVNLIHST RIHIMPSLNP DGFEKAASQP GELKDWFVGR
SNAQGIDLNR NFPDLDRIVY VNEKEGGPNN HLLKNMKKIV DQNTKLAPET KAVIHWIMDI PFVLSANLHG GDLVANYPYD
ETRSGSAHEY SSSPDDAIFQ SLARAYSSFN PAMSDPNRPP CRKNDDSSSF VDGTTNGGAW YSVPGGMQDF NYLSSNCFEI
TVELSCEKFP PEETLKTYWE DNKNSLISYL EQIHRGVKGF VRDLQGNPIA NATISVEGID HDVTS AKDGD YWRLIPGNY
KLTASAPGYL AITKKVAVPY SPAAGVDFEL ESFSERKEEE KEELMEWWKM MSETLNF

General References

Chu, K.Y., et al. (2011) *Islets* 3 (4), 155-165
Lee, T.K., et al. (2011) *J. Clin. Invest.* 121 (3), 880-892

DATA

SDS-PAGE



3ug by SDS-PAGE under reducing condition and visualized by coomassie blue stain.

15% SDS-PAGE (3ug)