

# Recombinant human AMSH-LP protein

Catalog Number: ATGP1955

## PRODUCT INFORMATION

---

### Expression system

E.coli

### Domain

1-436aa

### UniProt No.

Q96FJ0

### NCBI Accession No.

NP\_065850

### Alternative Names

AMSH-like protease, AMSH-like protease, ALMalpha, AMSH-FP, AMSH-LP, bA399O19.2

## PRODUCT SPECIFICATION

---

### Molecular Weight

52.1 kDa (458aa)

### Concentration

0.5mg/ml (determined by Bradford assay)

### Formulation

Liquid in. 20mM Tris-HCl buffer (pH 8.0) containing 0.2M NaCl, 20% glycerol, 0.1mM PMSF

### Purity

> 90% by SDS-PAGE

### Tag

His-Tag

### Application

SDS-PAGE

### Storage Condition

Can be stored at +2C to +8C for 1 week. For long term storage, aliquot and store at -20C to -80C. Avoid repeated freezing and thawing cycles.

## BACKGROUND

---

### Description

STAMBPL1 is a zinc metalloprotease that specifically cleaves 'Lys-63'-linked polyubiquitin chains, but doesn't cleave 'Lys-48'-linked polyubiquitin chains. The JAMM motif is essential for the protease activity. Recombinant human STAMBPL1 protein, fused to His-tag at N-terminus was expressed in E. coli and purified by using conventional chromatography techniques.

### Amino acid Sequence

<MGSSHHHHHH SGLVPRGSQ SH>MDQPFTVN SLKKLAAMPD HTDVLSPEE RVRALSKLGC NITISEDITP

# Recombinant human AMSH-LP protein

Catalog Number: ATGP1955

RRYFRSGVEM ERMASVYLEE GNLENFVLY NKFITLFVEK LPNHRDYQQC AVPEKQDIMK KLKEIAFPRT DELKNDLLKK  
YNVEYQEYLQ SKNKYKAEIL KKLEHQRLIE AERKRIAQMR QQLESEQFL FFEDQLKKQE LARGQMRSQQ TSGLSEQIDG  
SALSCFSTHQ NNSLLNVFAD QPNKSDATNY ASHSPPVNRA LTPAATLSAV QNLVVEGLRC VVLPEDLCHK FLQLAESNTV  
RGIETCGILC GKLTHNEFTI THVIVPKQSA GPDYCDMENV EELFNVQDQH DLLTLGWIHT HPTQTAFSS VDLHHCYSYQ  
LMLPEAIAIV CSPKHKDTGI FRLTNAGMLE VSACKKKGFH PHTKEPRLFS ICKHVLVKDI KIIVLCLR

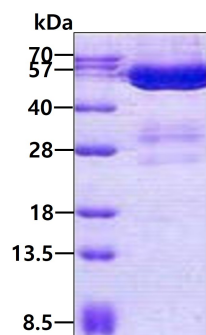
## General References

Nakamura M, Tanaka N, et al. (2006). Genes Cells. 11(6):593-606.

Kikuchi K, Ishii N, et al. (2003). Biochem Biophys Res Commun. 306(3):637-43.

## DATA

### SDS-PAGE



3ug by SDS-PAGE under reducing condition and visualized by coomassie blue stain.