

Recombinant human Cytokeratin 20/KRT20 protein

Catalog Number: ATGP1960

PRODUCT INFORMATION

Expression system

E.coli

Domain

1-424aa

UniProt No.

P35900

NCBI Accession No.

NP_061883

Alternative Names

CD20, CK20, K20, Keratin type I cytoskeletal 20, KRT20, KRT21

PRODUCT SPECIFICATION

Molecular Weight

50.9 kDa (447aa)

Concentration

0.5mg/ml (determined by Bradford assay)

Formulation

Liquid in. 20mM Tris-HCl buffer (pH 8.0) containing 0.4M urea, 10% glycerol

Purity

> 85% by SDS-PAGE

Tag

His-Tag

Application

SDS-PAGE, Denatured

Storage Condition

Can be stored at +2C to +8C for 1 week. For long term storage, aliquot and store at -20C to -80C. Avoid repeated freezing and thawing cycles.

BACKGROUND

Description

KRT20 is a member of the keratin family. The keratins are intermediate filament proteins responsible for the structural integrity of epithelial cells and are subdivided into cytokeratins and hair keratins. The type I cytokeratins consist of acidic proteins which are arranged in pairs of heterotypic keratin chains. KRT20 is a major cellular protein of mature enterocytes and goblet cells and is specifically expressed in the gastric and intestinal mucosa. Recombinant human KRT20 protein, fused to His-tag at N-terminus, was expressed in E. coli.

Recombinant human Cytokeratin 20/KRT20 protein

Catalog Number: ATGP1960

Amino acid Sequence

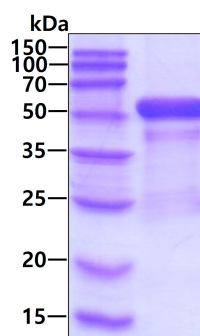
<MGSSHHHHH SSGLVPRGSH MGS>MDFSRRS FHRSLSSSLQ APVVSTVGMQ RLGTTSPSVYG GAGGRGIRIS
NSRHTVNYGS DLTGGGDLFV GNEKMAMQNL NDRLASYLEK VRTLEQSNSK LEVQIKQWYE TNAPRAGRDIY SAYYRQIEEL
RSQIKDAQLQ NARCVLQIDN AKLAAEDFRL KYETERGIRL TVEADLQGLN KVFDDTLHK TDLEIQIEEL NKDLALLKKE
HQEEVDGLHK HLGNTVNVEV DAAPGLNLGV IMNEMRQKYE VMAQKNLQEA KEQFERQTAV LQQQVTVNTE ELKGTEVQLT
ELRRTSQSLE IELQSHLSMK ESLEHTLEET KARYSSQLAN LQSLSSLEA QLMQIRSNME RQNNEYHILL DIKTRLEQEI
ATYRRLLEGE DVKTTEYQLS TLEERDIKKT RKIKTVVQEV VDGKVVSSSEV KEVEENI

General References

Schweizer J, Bowden PE, et al. (2006). J Cell Biol.174(2):169-74.

DATA

SDS-PAGE



3ug by SDS-PAGE under reducing condition and visualized by coomassie blue stain