

Recombinant human HAX-1 protein

Catalog Number: ATGP1969

PRODUCT INFORMATION

Expression system

E.coli

Domain

1-279aa

UniProt No.

O00165

NCBI Accession No.

NP_006109

Alternative Names

HCLS1 associated protein X-1 isoform a, HCLSBP1, HS1BP1, SCN3

PRODUCT SPECIFICATION

Molecular Weight

33.7 kDa (299aa) confirmed by MALDI-TOF

Concentration

0.5mg/ml (determined by Bradford assay)

Formulation

Liquid in. 20mM Tris-HCl buffer (pH 8.0) containing 10% glycerol 0.1M NaCl

Purity

> 80% by SDS-PAGE

Tag

His-Tag

Application

SDS-PAGE

Storage Condition

Can be stored at +2C to +8C for 1 week. For long term storage, aliquot and store at -20C to -80C. Avoid repeated freezing and thawing cycles.

BACKGROUND

Description

HAX1 is known to associate with HS1, a substrate of Src family tyrosine kinases. It also interacts with the product of PKD2, mutations in which are associated with autosomal-dominant polycystic kidney disease, and with F-actin-binding protein, cortactin. It is associated with autosomal recessive severe congenital neutropenia, also known as Kostmann syndrome. Recombinant human HAX1 protein, fused to His-tag at N-terminus, was expressed in E. coli and purified by using conventional chromatography techniques.

Recombinant human HAX-1 protein

Catalog Number: ATGP1969

Amino acid Sequence

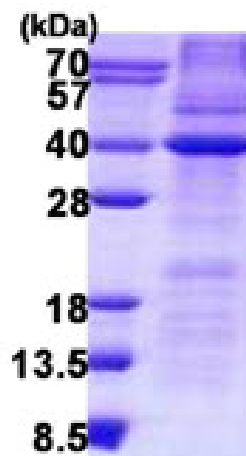
MGSSHHHHHH SSGLVPRGSH MSLFDLFRGF FGFPGRSHR DPFFGGMTRD EDDDEEEEE GGSWGRGNPR
FHSPQHPEE FGFGFSFSPG GGIRFHDNFG FDDLVRDFNS IFSDMGAWTL PSHPELPGP ESETPGERLR EGQTLRDSML
KYPDSHQPRI FGGVLESDAR SESPQAPDW GSQRPFHRFD DVWPMDPHPR TREDNDLDSQ VSQEGLGPVL QPQPKSYFKS
ISVTKITKPD GIVEERRTVV DSEGRTEVV TRHEADSSPR GDPEsprppa LDDAFSILDL FLGRWFRSR

General References

Modem S. et al. (2008) J Cell Physiol. 214:14-19.
Klein C. et al. (2007) Nat Genet. 39:86-92.

DATA

SDS-PAGE



3ug by SDS-PAGE under reducing condition and visualized by coomassie blue stain.

15% SDS-PAGE (3ug)