

# Recombinant human RPL12 protein

Catalog Number: ATGP1973

## PRODUCT INFORMATION

---

### Expression system

E.coli

### Domain

1-165aa

### UniProt No.

P30050

### NCBI Accession No.

NP\_000967

### Alternative Names

Ribosomal protein L12, L12

## PRODUCT SPECIFICATION

---

### Molecular Weight

20.2 kDa (188aa) confirmed by MALDI-TOF

### Concentration

0.5mg/ml (determined by Bradford assay)

### Formulation

Liquid in. 20mM Tris-HCl buffer (pH 8.0) containing 0.15M NaCl,20% glycerol, 1mM DTT

### Purity

> 95% by SDS-PAGE

### Tag

His-Tag

### Application

SDS-PAGE

### Storage Condition

Can be stored at +2C to +8C for 1 week. For long term storage, aliquot and store at -20C to -80C. Avoid repeated freezing and thawing cycles.

## BACKGROUND

---

### Description

Ribosomes, the organelles that catalyze protein synthesis, consist of a small 40S subunit and a large 60S subunit. Together these subunits are composed of 4 RNA species and approximately 80 structurally distinct proteins. RPL12 is a ribosomal protein that is a component of the 60S subunit. This protein belongs to the L11P family of ribosomal proteins. It is located in the cytoplasm. RPL12 binds directly to the 26S rRNA. Recombinant human RPL12 protein, fused to His-tag at N-terminus, was expressed in E. coli and purified by using conventional chromatography techniques.

## Recombinant human RPL12 protein

Catalog Number: ATGP1973

### Amino acid Sequence

MGSSHHHHHH SSSLVPRGSH MGSMPKFDK NEIKVVYLRC TGGEVGATSA LAPKIGPLGL SPKKVGDDIA KATGDWKGLR  
ITVKLTIQNR QAQIEVPSA SALIIKALKE PPRDRKKQKN IKHSGNITFD EIVNIARQMR HRSLARELSG TIKEILGTAQ  
SVGCNVDGRH PHDIIDDINS GAVECPAS

### General References

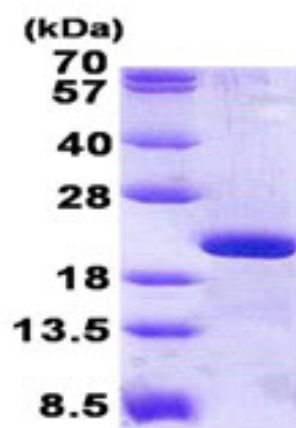
Rush J., et al. (2005) Nat. Biotechnol. 23:94-101

Daub H., et al. (2008) Mol. Cell. 31:438-448

## DATA

---

### SDS-PAGE



3ug by SDS-PAGE under reducing condition and visualized by coomassie blue stain.

15% SDS-PAGE (3ug)